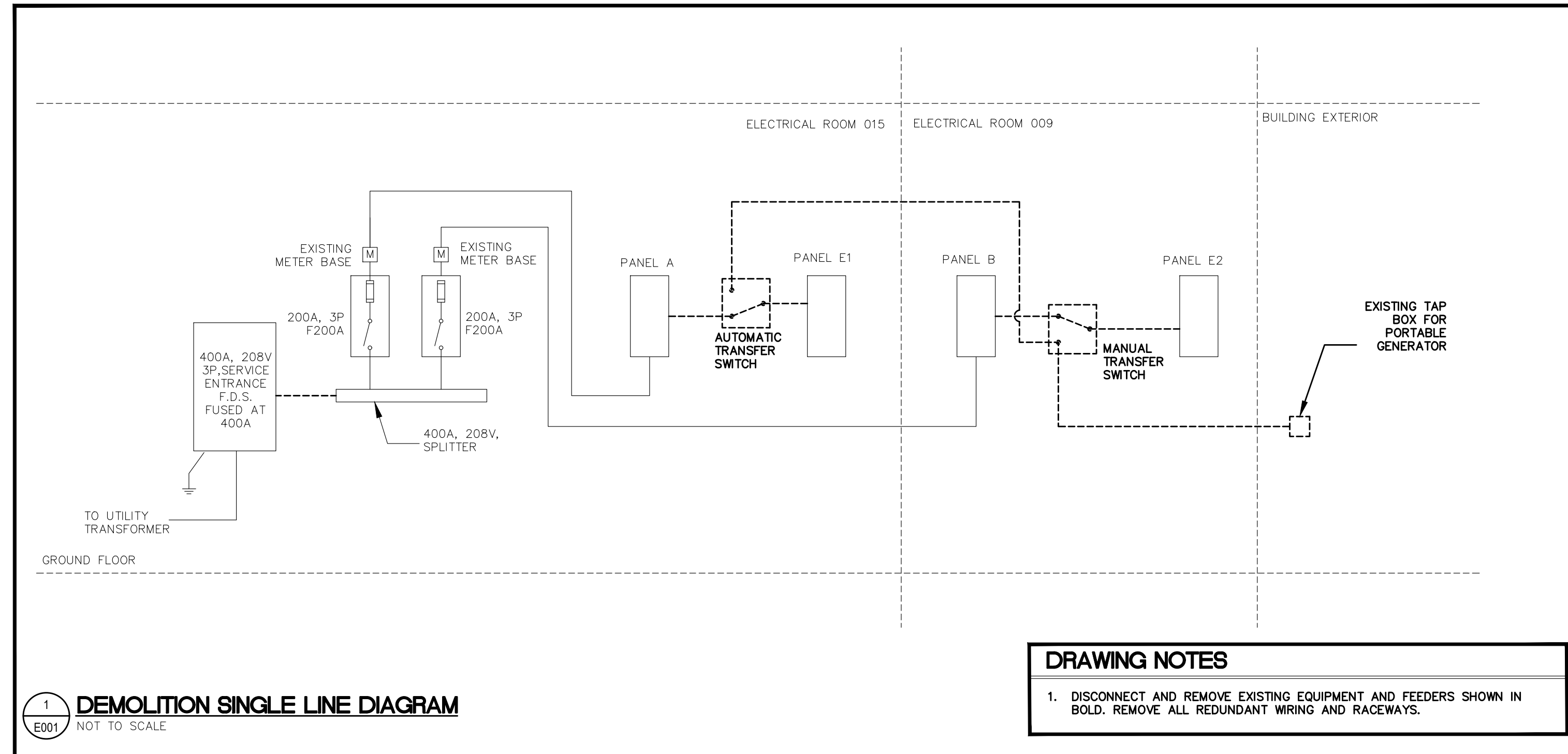


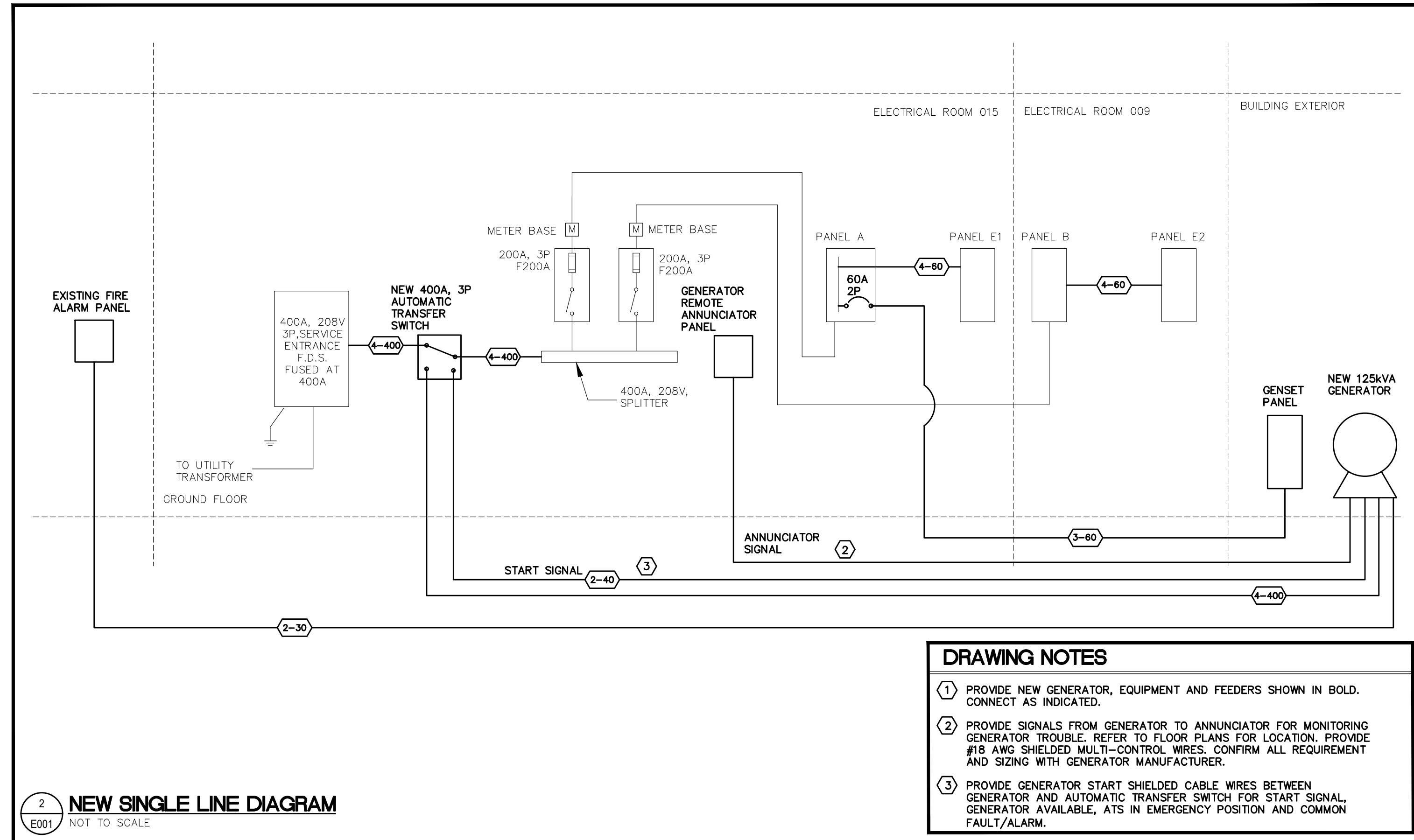
REVIEW ALL DRAWINGS AND VERIFY ALL DIMENSIONS AT THE SITE. DO NOT SCALE THE DRAWINGS. REPORT ALL DISCREPANCIES TO THE ENGINEER BEFORE PROCEEDING WITH ANY CONSTRUCTION OR SHOP FABRICATION. ALL DRAWINGS, SPECIFICATIONS AND RELATED DOCUMENTS ARE THE COPYRIGHT PROPERTY OF VANDERWESTEN & RUTHERFORD ASSOCIATES INC. AND MUST BE RETURNED UPON REQUEST. REPRODUCTION OF DRAWINGS, SPECIFICATIONS AND RELATED DOCUMENTS IN PART OR WHOLE IS FORBIDDEN WITHOUT THE ENGINEER'S WRITTEN PERMISSION.



1 DEMOLITION SINGLE LINE DIAGRAM
E001 NOT TO SCALE

DRAWING NOTES

- DISCONNECT AND REMOVE EXISTING EQUIPMENT AND FEEDERS SHOWN IN BOLD. REMOVE ALL REDUNDANT WIRING AND RACEWAYS.



2 NEW SINGLE LINE DIAGRAM
E001 NOT TO SCALE

DRAWING NOTES

- PROVIDE NEW GENERATOR, EQUIPMENT AND FEEDERS SHOWN IN BOLD. CONNECT AS INDICATED.
- PROVIDE SIGNALS FROM GENERATOR TO ANNUNCIATOR FOR MONITORING GENERATOR TROUBLE. REFER TO FLOOR PLANS FOR LOCATION. PROVIDE #18 AWG SHIELDED MULTI-CONTROL WIRES. CONFIRM ALL REQUIREMENT AND SIZING WITH GENERATOR MANUFACTURER.
- PROVIDE GENERATOR START SHIELDED CABLE WIRES BETWEEN GENERATOR AND AUTOMATIC TRANSFER SWITCH FOR START SIGNAL. GENERATOR AVAILABLE, ATS IN EMERGENCY POSITION AND COMMON FAULT/ALARM.

EX. PANEL A 225AMP 120/208V 3Ø 4W SURFACE MTD
NO TYPE ELEC ROOM 015

WATTS FOR	P	AMP	CCT	CCT	AMP	P	FOR	WATTS
REC-PANEL	1	15	1	2	15	1	LGT-OUTSIDE	
REC-PANEL	1	15	3	4	15	1	LGT-OUTSIDE	
EXISTING CIRCUIT	1	15	5	6	15	1	LGT-OUTSIDE	
ELECTRIC HEATER	2	15	7	8	15	1	REC-PROJECTOR	
			9	10	15	1	REC-PROJECTOR	
SPACE			11	12	15	1	EXISTING CIRCUIT	
SPACE			13	14	15	1	REC-OFFICE	
REC-DRYER	2	30	17	18	15	1	REC-OFFICE	
			19	20	15	1	EXISTING CIRCUIT	
REC-STOVE	2	40	21	22	15	1	EXISTING CIRCUIT	
			23	24	15	1	EXISTING CIRCUIT	
			25	26	15	1	EXISTING CIRCUIT	
ROOF TOP UNIT	3	40	27	28	15	1	REC-APPARATUS	
			29	30	15	1	REC-APPARATUS	
GENSET PANEL	2	60	31	32	15	2	REC-STH WALL SPILT	
REC-WASHER	1	20	33	34				
			37	38				
PANEL E1	3	60	39	40	15	1	EXISTING CIRCUIT	
REC-WASHER	1	15	43	44	15	1	EXISTING CIRCUIT	
REC-KITCHEN COUTNER	1	15	45	46			SPACE	
REC-KITCHEN COUTNER	1	15	47	48			SPACE	
EXISTING CIRCUIT	1	15	49	50			SPACE	
REC-OUTSIDE PLUG	1	15	51	52			SPACE	
SPACE			53	54			SPACE	

EX. PANEL B 225AMP 120/208V 3Ø 4W SURFACE MTD
NO TYPE ELEC ROOM 009

WATTS FOR	P	AMP	CCT	CCT	AMP	P	FOR	WATTS
EXISTING CIRCUIT	1	15	1	2				
REC-FRONT OUTSIDE	1	15	3	4	15	3	DISHWASHER	
REC-REAR OUTSIDE	1	15	5	6				
REC-HALL	1	15	7	8	20	1	HEAT FOOD CABINET	
REC-HALL	1	20	9	10	15	1	REC-KITCHEN	
REC-SERVERY	1	20	11	12	20	1	REC-KITCHEN BAR	
REC-SERVERY	1	20	13	14	20	1	REC-KITCHEN	
EXHAUST FANS	1	15	15	16	15	1	BAR FRIDGE	
REC-LIBRARY	1	15	17	18	15	1	REC-AMP	
REC-LIBRARY	1	15	19	20	15	1	EXISTING CIRCUIT	
			21	22	15	1	EXISTING CIRCUIT	
STAGE TAP BOX	3	100	23	24	15	1	EXISTING CIRCUIT	
			25	26	15	2	HEATER	
EXISTING CIRCUIT	1	15	27	28				
EXISTING CIRCUIT	1	15	29	30	15	2	HEATER	
EXISTING CIRCUIT	1	15	31	32				
EXISTING CIRCUIT	1	15	33	34			SPACE	
EXISTING CIRCUIT	1	15	35	36			SPACE	
EXISTING CIRCUIT	1	15	37	38	15	2	HEATER	
EXISTING CIRCUIT	1	15	39	40				
EXISTING CIRCUIT	1	15	41	42	15	2	HEATER	
EXISTING CIRCUIT	1	15	43	44				
EXISTING CIRCUIT	1	15	45	46	15	1	REC-PANEL	
EXISTING CIRCUIT	1	15	47	48	15	1	REC-PANEL	
EXISTING CIRCUIT	1	15	49	50				
EXISTING CIRCUIT	1	15	51	52	70	3	COMM-ROOF TOP UNIT	
SPACE			53	54				
SPACE			55	56				
SPACE			57	58	50	3	UB-ROOF TOP UNIT	
SPACE			59	60				
SPACE			61	62	15	1	LGT-OUTSIDE	
SPACE			63	64	15	1	LGT-OUTSIDE	
SPACE			64	66	15	1	LGT-OUTSIDE	
SPACE			65	68				
SPACE			69	70	60	3	PANEL E2	
SPACE			71	72				

EX. PANEL E2 225AMP 120/208V 3Ø 4W SURFACE MTD
NO TYPE ELEC ROOM 009

WATTS FOR	P	AMP	CCT	CCT	AMP	P	FOR	WATTS
REC-HALL	1	20	1	2	15	1	KITCHEN HOOD	
REC-HALL	1	20	3	4	15	1	FIRE SUP. SYSTEM	
REC-KITCHEN	1	15	5	6	15	1	KITCHEN LIGHTS	
HANDICAP DOOR	1	15	7	8	15	1	REC-KITCHEN	
KITCHEN FRIDGE	1	20	9	10	15	1	LGT-HALL	
BAR FRIDGE	1	15	11	12	15	1	LGT-HALL	
KITCHEN EXHAUST	1	15	13	14	15	1	LGT-LIBRARY	
REC-LIBRARY	1	15	15	16	15	1	LGT-CORRIDOR	
EXISTING CIRCUIT	1	15	17	18	15	1	EXIT LIGHTS	
HANDICAP DOOR	1	15	19	20	15	1	LGT-BATHROOM	
WATER HEATER	1	15	21	22	15	1	CIRC. PUMP	
SPACE			23	24	15	1	BATH FAN	
SPACE			25	26			SPACE	
SPACE			27	28			SPACE	
SPACE			29	30			SPACE	

EX. PANEL E1 225AMP 120/208V 3Ø 4W SURFACE MTD
NO TYPE ELEC ROOM 015

WATTS FOR	P	AMP	CCT	CCT	AMP	P	FOR	WATTS
FIRE ALARM PANEL	1	15	1	2	20	1	REC-CORD REEL	
EXISTING CIRCUIT	1	15	3	4	20	1	REC-CORD REEL	
EXISTING CIRCUIT	1	15	5	6	20	1	REC-CORD REEL	
SEPTIC PUMP	1	20	7	8	20	1	LGT-APPARATUS	
SEPTIC PUMP	1	20	9	10	15	1	LGT-TRAINING RM/EXIT	
SEPTIC CONT. POWER	1	15	11	12	15	1	LGT-APPARATUS/EXIT	
SEPTIC ALARM	1	15	13	14	15	1	UNIT HEATER	
BATH EXHAUST	1	15	15	16	15	1	CO2 DETECTOR	
LGT-BATH/OFFICE/EXIT	1	15	17	18	15	1	LOUVRE	
IN-FLOOR CIRC. PUMP	1	15	19	20	15	1	UNIT HEATER	
BOILER	1	15	21	22	15	1	EXHAUST FAN	
EXISTING CIRCUIT	1	15	23	24	15	1	EXISTING CIRCUIT	
REC-PHONE	1	15	25	26				
REC-APPARATUS	1	15	27	28	15	3	OVERHEAD DOORS	
EXISTING CIRCUIT	1	15	29	30				
REC-APP/RADIO	1	15	31	32	15	2	SIREN	
REC-OUTSIDE	1	15	33	34			SPACE	
SPACE			35	36			SPACE	
SPACE			37	38			SPACE	
SPACE			39	40			SPACE	
SPACE			41	42			SPACE	

NOTES FOR EXISTING PANELS

- BREAKERS LABELED AS "PANEL E1" AND "PANEL E2" ARE EXISTING TO REMAIN AND TO BE REUSED WITH INSTALLATION OF NEW SUB PANEL FEEDERS, AS NOTED IN DETAIL 2 ON THIS SHEET.
- BREAKER LABELED "GENSET PANEL" IS TO BE PROVIDED NEW AND CONNECTED TO GENSET PANEL AT NEW GENERATOR.
- EXISTING PANEL SCHEDULES ARE PROVIDED FOR REFERENCE ONLY

ELECTRICAL DRAWING LIST

E001	ELECTRICAL DRAWING LIST, LEGEND, NOTES, SCHEDULES AND SINGLE LINE DIAGRAM
E100	DEMOLITION ELECTRICAL SITE PLAN
E101	NEW ELECTRICAL SITE PLAN AND DETAILS
M100	SITE PLAN AND NOTES - MECHANICAL NEW AND DEMOLITION

GENERAL NOTES

- DO NOT SCALE DRAWINGS FOR INSTALLATION PURPOSES. OBTAIN ALL DIMENSIONS FROM MANUFACTURER'S SHOP DRAWINGS, AND ON SITE INSPECTIONS.
- ALL EXISTING DEAD WIRING AND CONDUIT IN RENOVATED AREAS SHALL BE REMOVED IN ITS ENTIRETY WHERE ACCESSIBLE. WHERE NOT ACCESSIBLE, WIRING ONLY SHALL BE REMOVED AND CONDUIT SHALL REMAIN.
- DISCONNECT AND REMOVE ANY ELECTRICAL EQUIPMENT IN CEILING SPACE OR WALLS THAT CAUSES INTERFERENCES DURING RENOVATION WORK. ALL EQUIPMENT SHALL BE REPLACED AND RECONNECTED UPON COMPLETION OF RENOVATION WORK.
- ELECTRICAL EQUIPMENT BEING REMOVED AND NOT BEING REUSED WILL BE STORED ON SITE AND REMAIN THE PROPERTY OF THE OWNER. ANY SUCH EQUIPMENT THE OWNER DOES NOT WISH TO RETAIN WILL BE REMOVED FROM SITE AND DISPOSED OF BY THIS TRADE.
- REVIEW ARCHITECTURAL DRAWINGS AND PROVIDE ON SITE INSPECTIONS TO DETERMINE FULL EXTENT OF PROJECT PRIOR TO SUBMITTING BID.

DEMOLITION NOTES

- ELECTRICAL SYSTEMS SHOWN ON DEMOLITION PLANS ARE BASED ON INFORMATION OBTAINED FROM ORIGINAL CONSTRUCTION CONTRACT/TENDER DOCUMENTS. THESE DRAWINGS ARE NOT BASED ON "AS-BUILT RECORDS" OR ON EXHAUSTIVE FIELD MEASUREMENT AND ARE PROVIDED TO ASSIST THE CONTRACTOR IN DETERMINING THE EXTENT OF WORK REQUIRED. THE CONTRACTOR SHALL MAKE ALLOWANCE IN THEIR TENDER PRICE FOR THE REMOVAL OF ADDITIONAL ABANDONED SERVICES AND THE PROTECTION OF EXISTING SERVICES THAT MUST REMAIN. RECORD THE LOCATION OF ALL EXISTING SERVICES THAT REMAIN ON AS-BUILT RECORD DRAWINGS.

FEEDER SCHEDULE

TAG	QUANTITY & SIZE OF COPPER CONDUCTORS AND CONDUITS	FEEDER AMPACITY
(2-40)	2 #10 + #10 GROUND IN 3/4" (19mm) CONDUIT	40
(5-60)	3 #6 + #10 GROUND IN 1-1/4" (35mm) CONDUIT	60
(4-400)	2 (4 #3/0 + #6 GROUND IN 2-1/2" (63mm) CONDUIT)	400

LEGEND

SYMBOL	DESCRIPTION	MTG HT & TO TOP
[Symbol]	ELECTRICAL PANEL	78" (1981)
[Symbol]	DISCONNECT SWITCH	50" (1270)
EX	EXISTING TO REMAIN	---

No.	Issued	Date	By
2	ISSUED FOR TENDER	2026-03-31	
1	ISSUED FOR REVIEW	2025-08-21	

VR Vanderwesten & Rutherford Associates Inc.
Mechanical & Electrical Engineers
London, Windsor, Ottawa
www.vrinc.ca 1-519-652-5047
V19 25-009

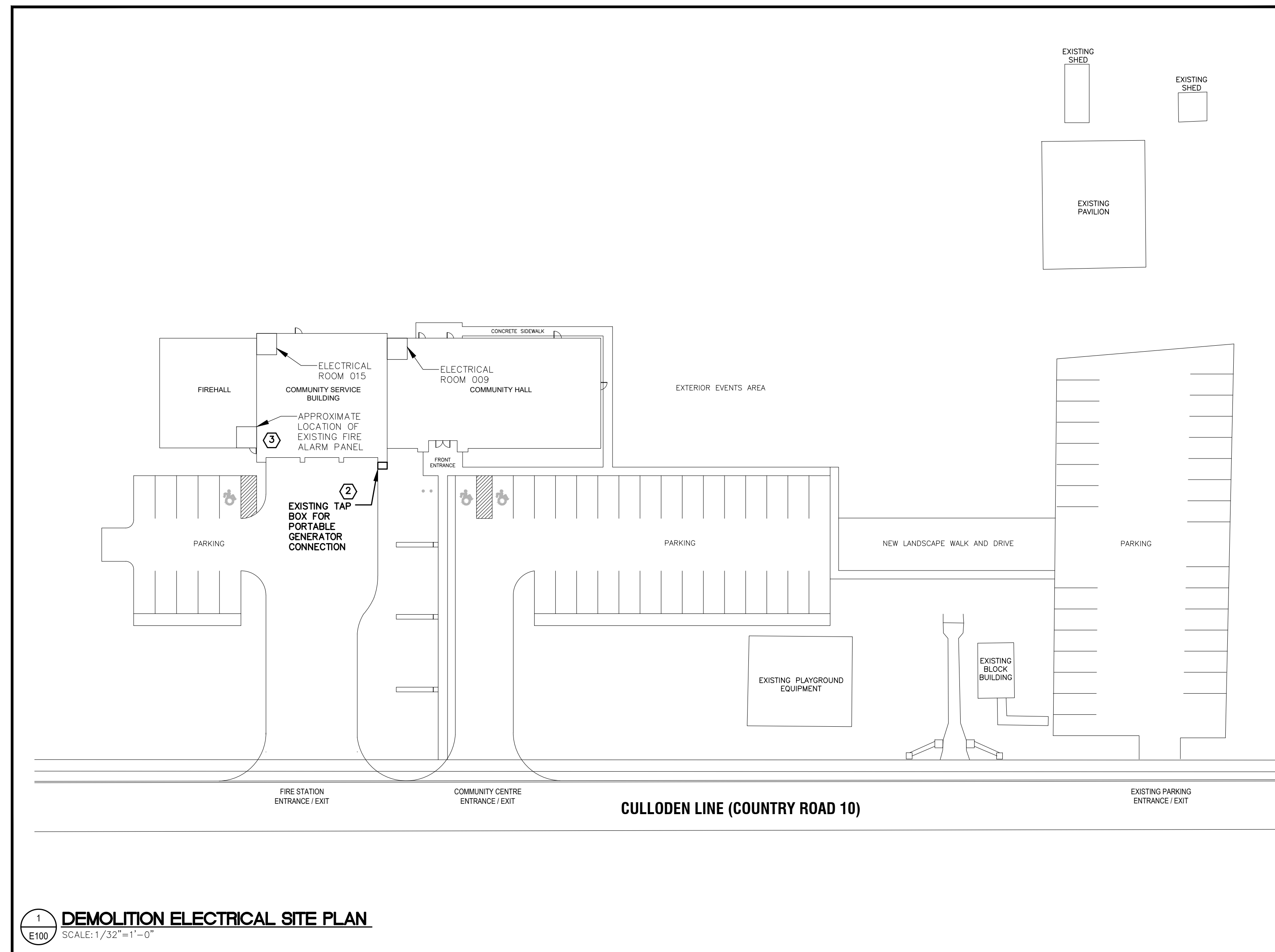
Seals

Project:
BROWNSVILLE COMMUNITY CENTRE FIRE HALL BACK-UP GENERATOR

292244 CULLODEN LINE, TILLSONBURG, ON
Drawing Title:

ELECTRICAL DRAWING LIST, LEGEND, NOTES, SCHEDULES AND SINGLE LINE DIAGRAM

Drawn By: MA	Checked By: AF
Date:	Scale: NOT TO SCALE
Project Number:	Drawing No.: E001



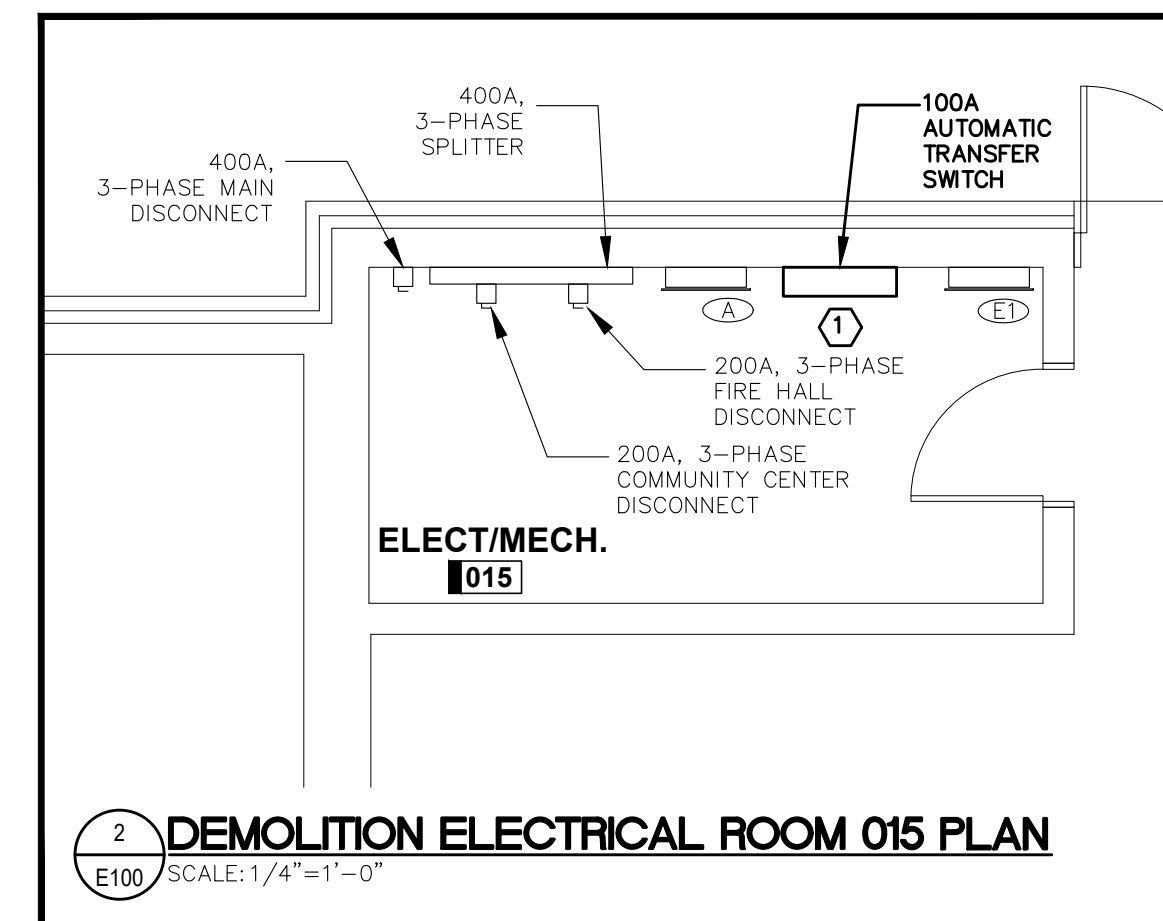
1 DEMOLITION ELECTRICAL SITE PLAN
SCALE: 1/32"=1'-0"

GENERAL NOTES

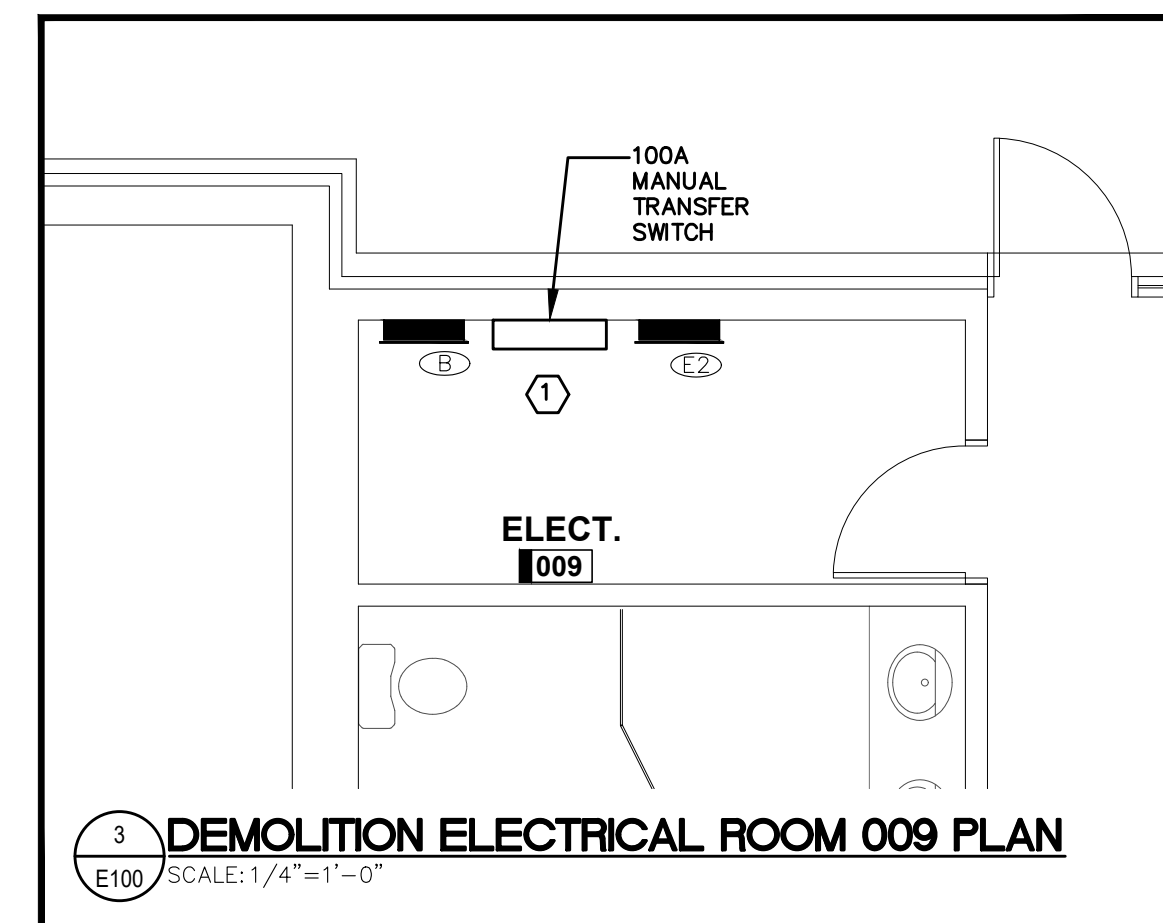
- COORDINATE EXACT CONDUIT ROUTINGS WITH BUILDING ELEMENTS AND SYSTEMS IN THE FIELD PRIOR TO INSTALLATION. INSTALL CONDUITS PARALLEL TO BUILDING LINES TO THE GREATEST EXTENT POSSIBLE.
- MAKE GOOD SURFACES AFFECTED BY THIS WORK AND REPAIR FINISH TO THE SATISFACTION OF CONSULTANT.
- DIVISION 26 SHALL PROVIDE FIRESTOPPING OF NEW ELECTRICAL PENETRATIONS THROUGH ALL WALLS AND FLOORS IN THE AREAS OF WORK. REFER TO ARCHITECTURAL DRAWINGS FOR RATINGS OF FIRE SEPARATIONS. PROVIDE MANUFACTURER'S SHOP DRAWINGS FOR EACH PENETRATION CONDITION AND PROPOSED SEALANT TYPE.
- PROVIDE UPDATED TYPED PANEL DIRECTORIES UPON COMPLETION OF WORK FOR ALL PANELS AFFECTED BY THE RENOVATION WORK.

DEMOLITION DRAWING NOTES

- DISCONNECT AND REMOVE TRANSFER SWITCH. REMOVE FEEDERS BACK TO POWER SOURCES, FEEDER TO LOAD PANEL AND ALL ASSOCIATED WIRING. REFER TO SINGLE LINE DIAGRAMS ON DRAWING E001 FOR FURTHER DETAILS.
- DISCONNECT AND REMOVE EXISTING TAP BOX FOR PORTABLE GENERATOR AND REMOVE FEEDERS AND CONDUIT BACK TO SOURCE. REFER TO SINGLE LINE DIAGRAMS ON DRAWING E001 FOR FURTHER DETAILS.
- CONTRACTOR TO CONFIRM EXACT LOCATION AND TYPE OF FIRE ALARM PANEL ON-SITE.



2 DEMOLITION ELECTRICAL ROOM 015 PLAN
SCALE: 1/4"=1'-0"



3 DEMOLITION ELECTRICAL ROOM 009 PLAN
SCALE: 1/4"=1'-0"

REVIEW ALL DRAWINGS AND VERIFY ALL DIMENSIONS AT THE SITE. DO NOT SCALE THE DRAWINGS. REPORT ALL DISCREPANCIES TO THE ENGINEER BEFORE PROCEEDING WITH ANY CONSTRUCTION OR SHOP FABRICATION. ALL DRAWINGS, SPECIFICATIONS AND RELATED DOCUMENTS ARE THE COPYRIGHT PROPERTY OF VANDERWESTEN & RUTHERFORD ASSOCIATES INC. AND MUST BE RETURNED UPON REQUEST. REPRODUCTION OF DRAWINGS, SPECIFICATIONS AND RELATED DOCUMENTS IN PART OR WHOLE IS FORBIDDEN WITHOUT THE ENGINEER'S WRITTEN PERMISSION.

No.	Issued	Date	By
2	ISSUED FOR TENDER	2026-03-31	
1	ISSUED FOR REVIEW	2025-08-21	

VR Vanderwesten & Rutherford Associates Inc.
Mechanical & Electrical Engineers
London, Windsor, Ottawa
www.vreng.ca | 519-652-5047
VIR 25-009

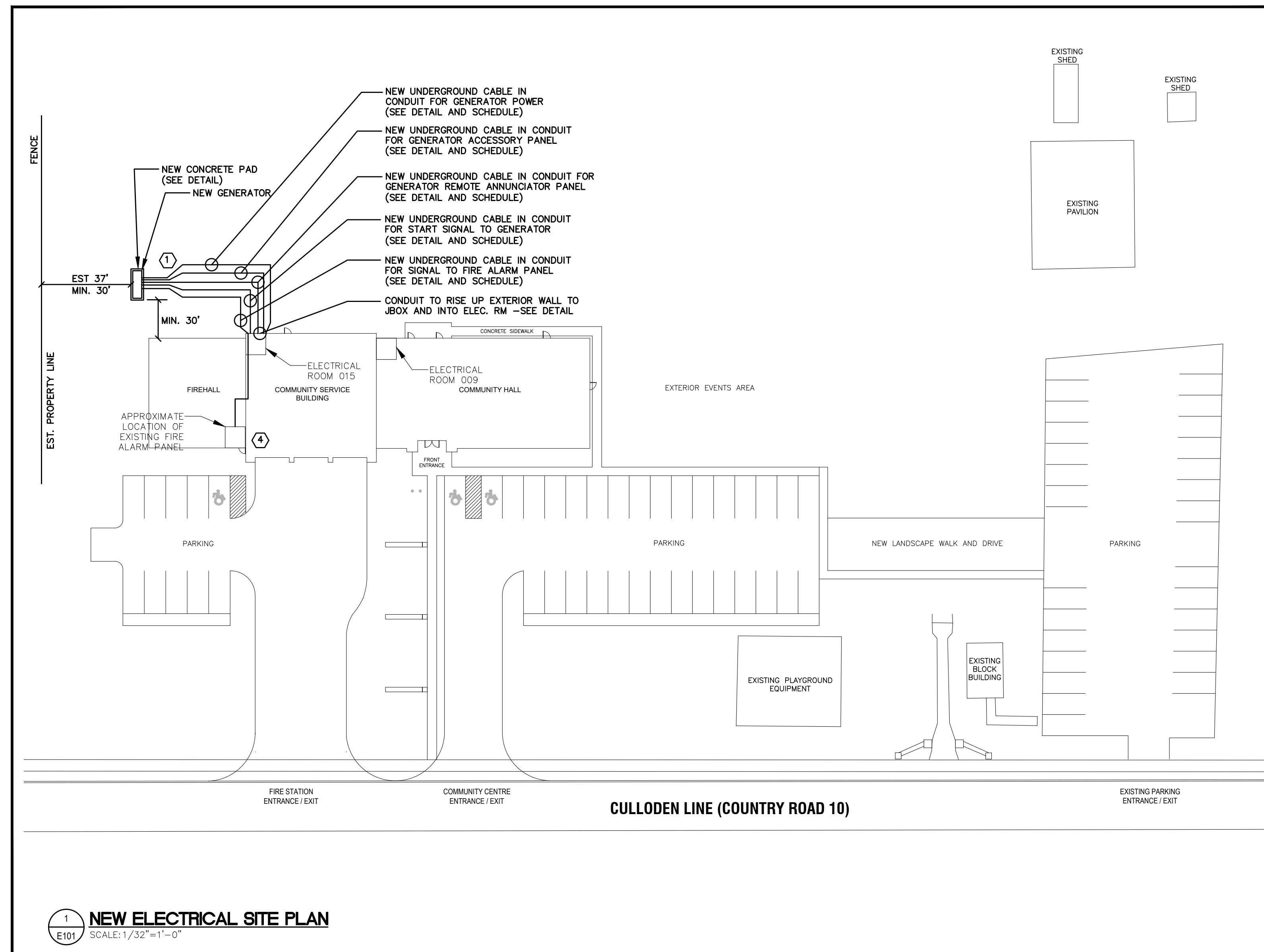
Seals

Project:
BROWNSVILLE COMMUNITY CENTRE FIRE HALL BACK-UP GENERATOR

292244 CULLODEN LINE, TILLSONBURG, ON

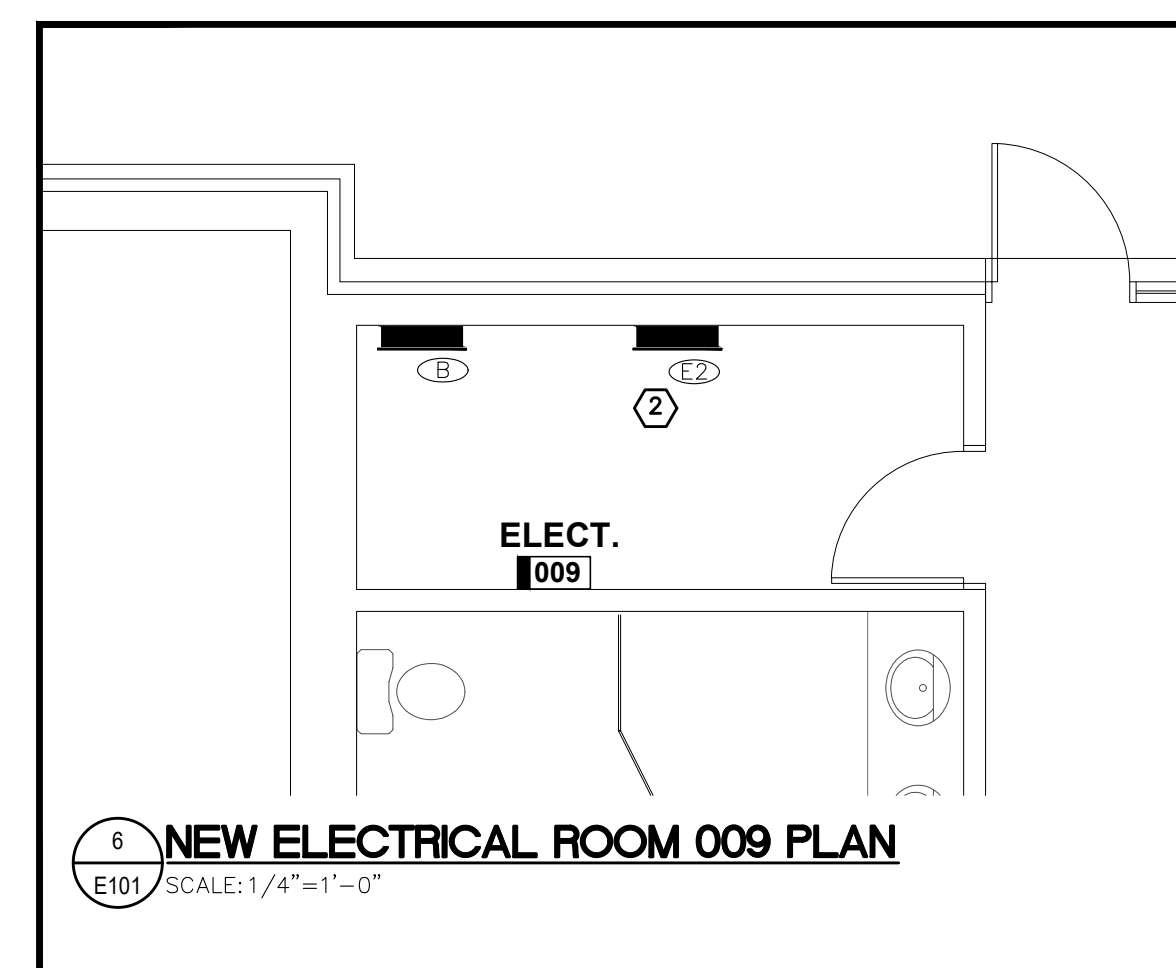
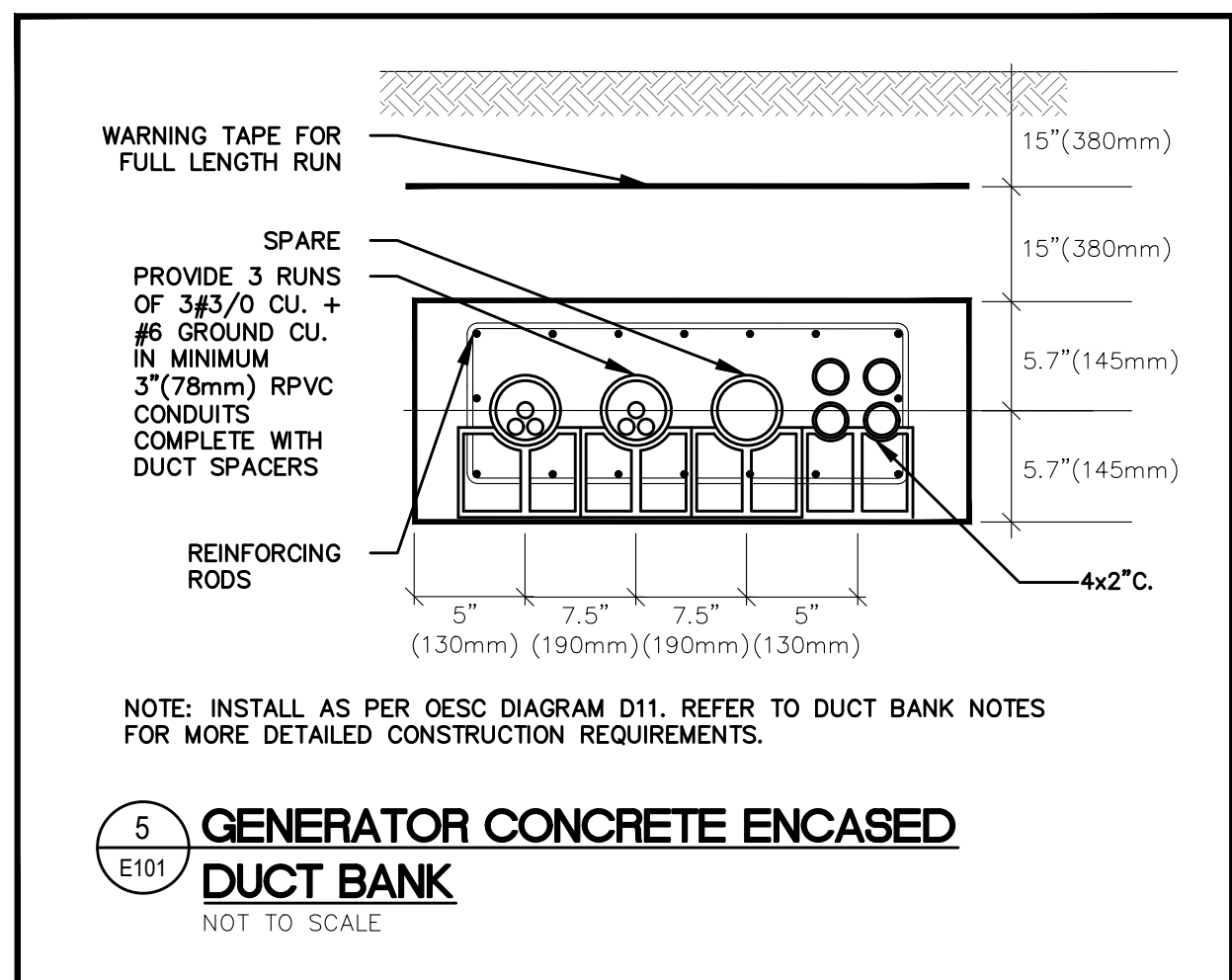
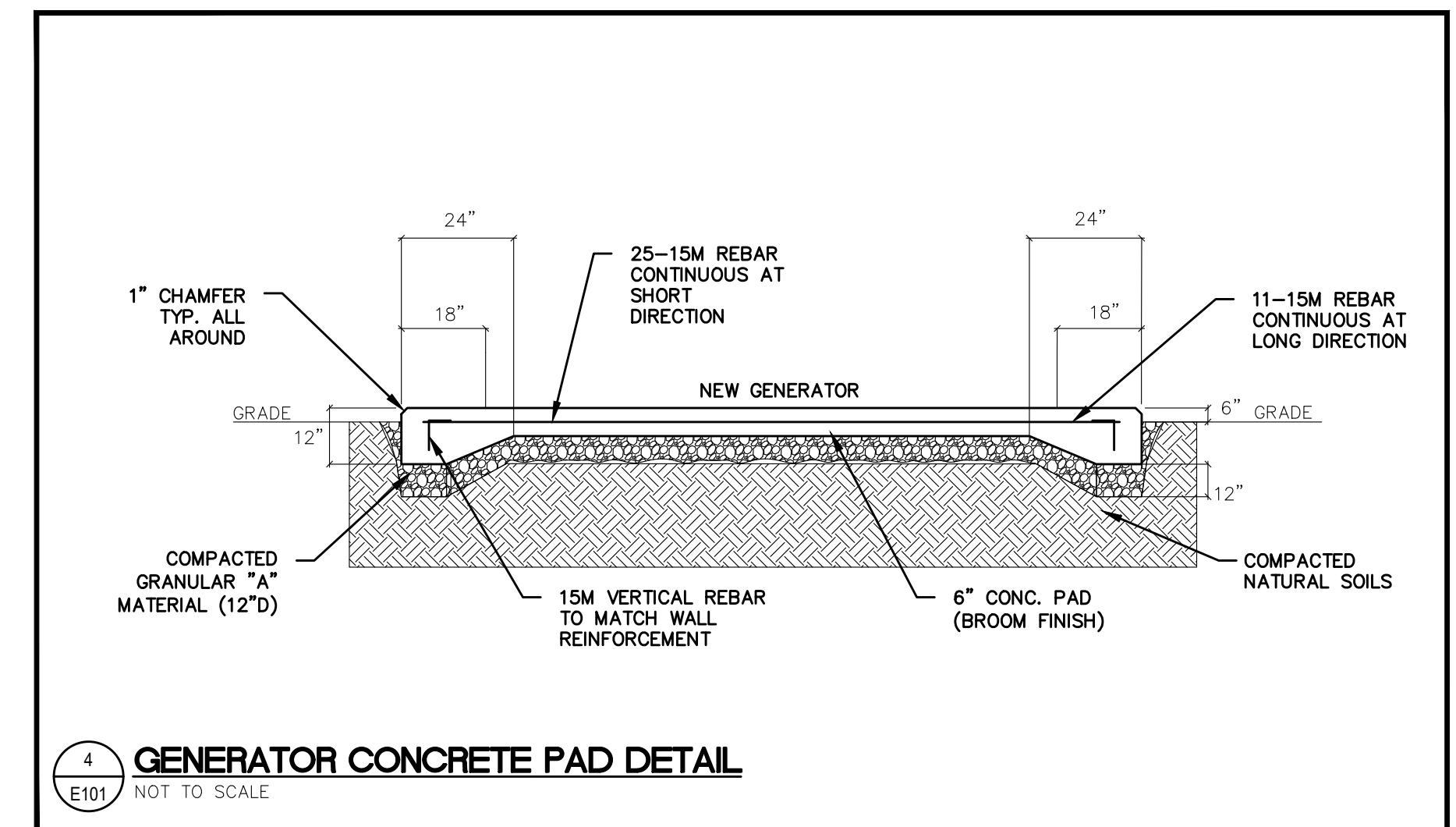
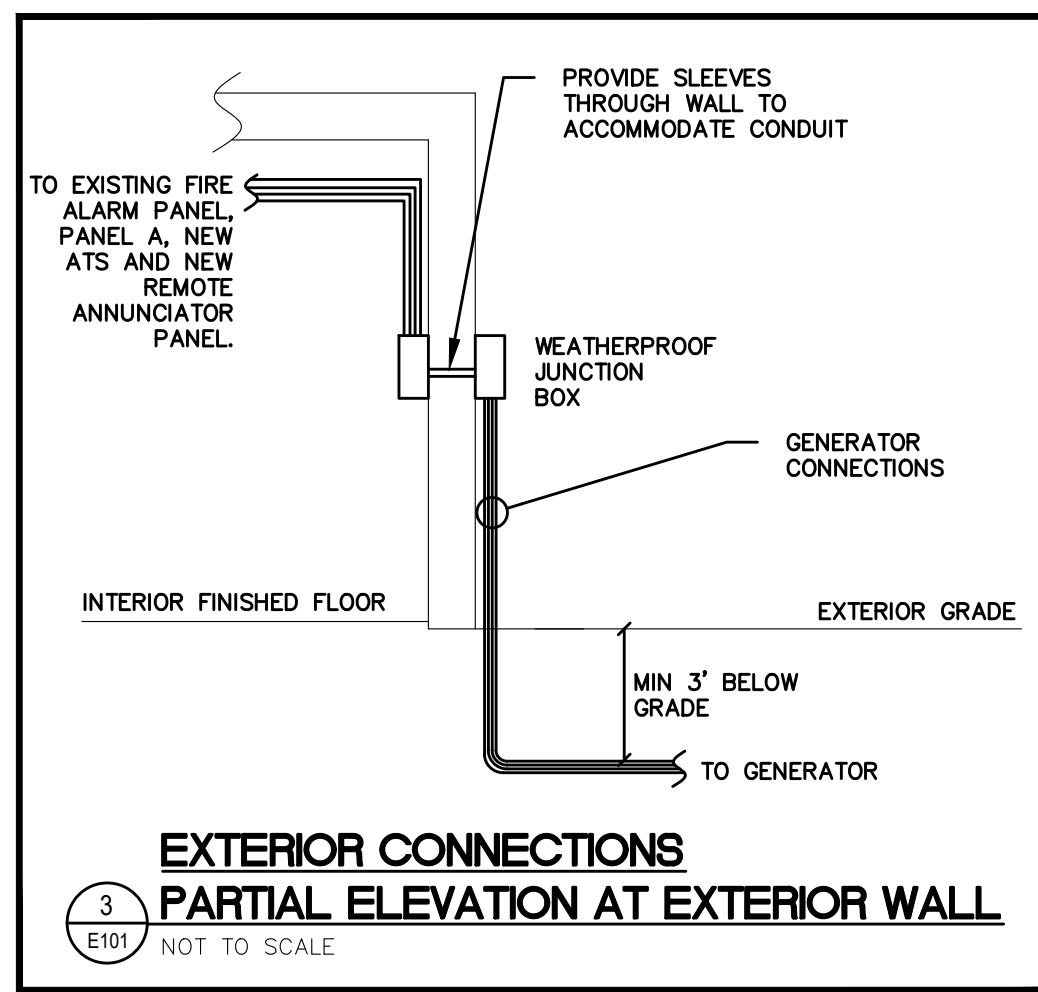
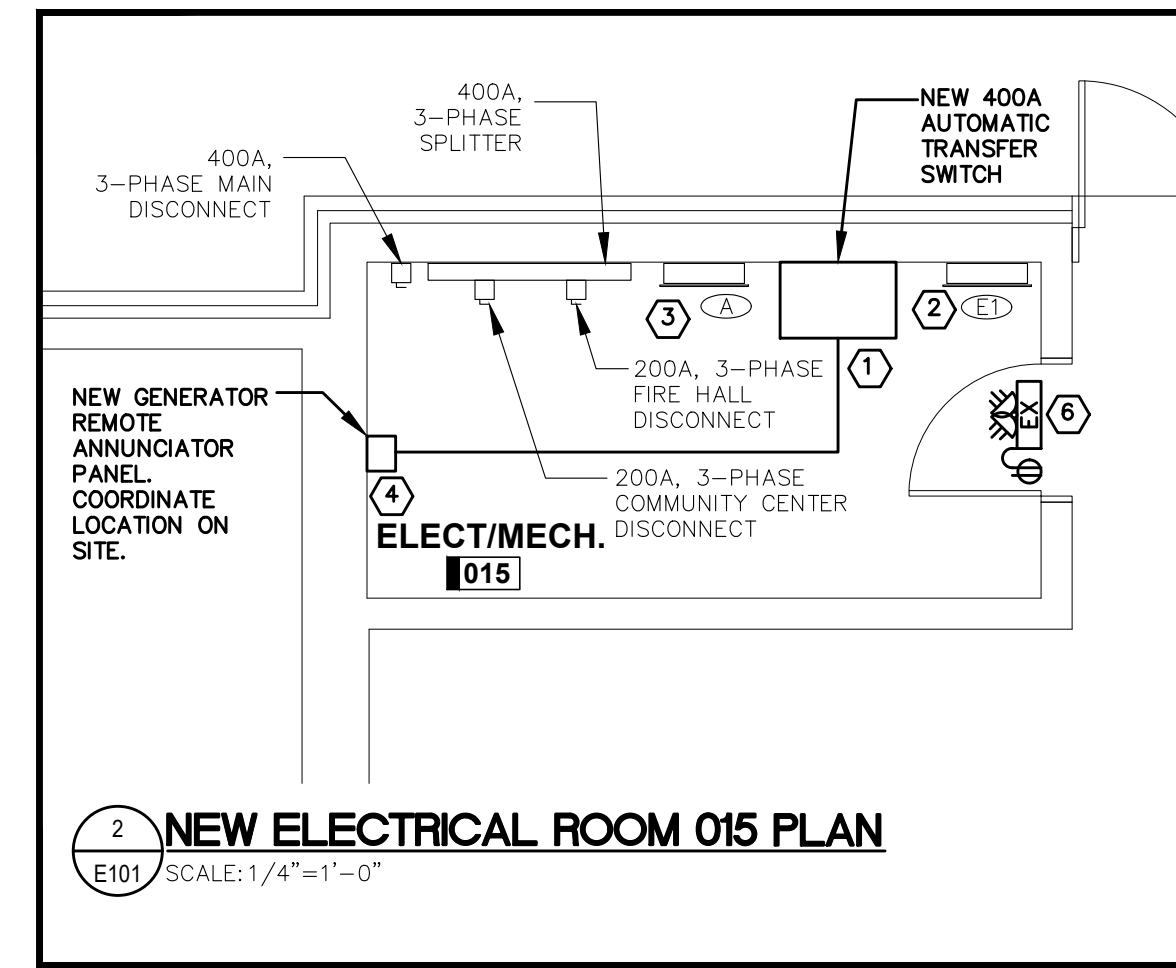
Drawing Title:
DEMOLITION ELECTRICAL SITE PLAN

Drawn By: MA	Checked By: AF
Date:	Scale: AS NOTED
Project Number:	Drawing No.: E100



- GENERAL NOTES**
- DEVICES/EQUIPMENT/LUMINAIRES TAGGED WITH 'REL' ARE EXISTING TO BE RELOCATED. FOR EACH DEVICE/EQUIPMENT/LUMINAIRE, MODIFY AND EXTEND EXISTING CONDUIT AND WIRING TO NEW LOCATION AS REQUIRED, UNLESS NOTED OTHERWISE.
 - DEVICES/EQUIPMENT/LUMINAIRES TAGGED WITH 'REP' ARE EXISTING TO BE REPLACED WITH NEW. FOR EACH DEVICE/EQUIPMENT/LUMINAIRE, PROVIDE NEW REPLACEMENT DEVICE/EQUIPMENT/LUMINAIRE AND RECONNECT WITH NEW WIRING IN CONDUIT. EXISTING CONDUIT MAY BE REUSED TO THE GREATEST EXTENT POSSIBLE.
 - DEVICES/EQUIPMENT/LUMINAIRES TAGGED WITH 'REP/REL' ARE EXISTING TO BE REPLACED WITH NEW AT A NEW LOCATION. FOR EACH DEVICE/EQUIPMENT/LUMINAIRE, PROVIDE NEW REPLACEMENT DEVICE/EQUIPMENT/LUMINAIRE AND RECONNECT WITH NEW WIRING IN CONDUIT. MODIFY AND EXTEND EXISTING CONDUIT TO NEW LOCATION AS REQUIRED.
 - IN LOCATIONS WITH EXISTING HARD WALLS, FISH FLEXIBLE CONDUIT THROUGH HARD WALLS. IN EXISTING WALL LOCATIONS WHERE NOT POSSIBLE TO FISH FLEXIBLE CONDUIT TO DEVICE, PROVIDE V500 SERIES LEGRAND WIREMOLD OR APPROVED EQUIVALENT C/W REQUIRED ACCESSORIES FOR A COMPLETE RACEWAY. PROVIDE V500 SERIES LEGRAND LOW PROFILE DEVICE BACK-BOX OR APPROVED EQUIVALENT. COORDINATE BACK-BOX REQUIREMENTS WITH DEVICE MANUFACTURER. COORDINATE EXISTING HARD WALLS WITH ARCHITECTURAL DRAWINGS.
 - COORDINATE EXACT CONDUIT ROUTINGS WITH BUILDING ELEMENTS AND SYSTEMS IN THE FIELD PRIOR TO INSTALLATION. INSTALL CONDUITS PARALLEL TO BUILDING LINES TO THE GREATEST EXTENT POSSIBLE.
 - MAKE GOOD SURFACES AFFECTED BY THIS WORK AND REPAIR FINISH TO THE SATISFACTION OF CONSULTANT.
 - DIVISION 26 SHALL PROVIDE FIRESTOPPING OF NEW ELECTRICAL PENETRATIONS THROUGH ALL WALLS AND FLOORS IN THE AREAS OF WORK. REFER TO ARCHITECTURAL DRAWINGS FOR RATINGS OF FIRE SEPARATIONS. PROVIDE MANUFACTURER'S SHOP DRAWINGS FOR EACH PENETRATION CONDITION AND PROPOSED SEALANT TYPE.
 - PROVIDE UPDATED TYPED PANEL DIRECTORIES UPON COMPLETION OF WORK FOR ALL PANELS AFFECTED BY THE RENOVATION WORK.
 - EXISTING DEVICES/EQUIPMENT/LUMINAIRES IN LIGHT LINES TAGGED WITH 'EX' ARE EXISTING TO REMAIN.
 - CONTRACTOR TO MAKE GOOD ALL EXTERIOR GRADE SURFACES AND ENSURE THEY ARE BACK TO MATCHING EXISTING CONDITIONS PRIOR TO JOB COMPLETION. CONTRACTOR IS RESPONSIBLE FOR ALL TRENCHING AS PER ESA, AND BACK-FILL AND TOP DRESSING.

- POWER AND SYSTEMS KEY NOTES**
- PROVIDE NEW GENERATOR AND TRANSFER SWITCH. CONNECT AS INDICATED IN SINGLE LINE DIAGRAM ON DRAWING E001.
 - REFEED EXISTING PANEL AS INDICATED IN SINGLE LINE DIAGRAM ON DRAWING E001. REUSE EXISTING 60A CIRCUIT BREAKERS
 - PROVIDE NEW 60A, 2P, 208V BREAKER TO MATCH EXISTING PANEL A AND FEED THE GENERATOR ACCESSORY PANEL AS SHOWN.
 - CONTRACTOR TO CONFIRM EXACT LOCATION AND MODEL OF FIRE ALARM PANEL.
 - SEE DETAIL 3 ON THIS DRAWING FOR WIRING TRANSITION THROUGH EXTERIOR WALL
 - CONNECT NEW EMERGENCY BATTERY PACK AND DOUBLE HEAD LIGHT TO EXISTING CIRCUIT.



REVIEW ALL DRAWINGS AND VERIFY ALL DIMENSIONS AT THE SITE. DO NOT SCALE THE DRAWINGS. REPORT ALL DISCREPANCIES TO THE ENGINEER BEFORE PROCEEDING WITH ANY CONSTRUCTION OR SHOP FABRICATION. ALL DRAWINGS, SPECIFICATIONS AND RELATED DOCUMENTS ARE THE COPYRIGHT PROPERTY OF VANDERWESTEN & RUTHERFORD ASSOCIATES INC. AND MUST BE RETURNED UPON REQUEST. REPRODUCTION OF DRAWINGS, SPECIFICATIONS AND RELATED DOCUMENTS IN PART OR WHOLE IS FORBIDDEN WITHOUT THE ENGINEER'S WRITTEN PERMISSION.

No.	Issued	Date	By
2	ISSUED FOR TENDER	2026-03-31	
1	ISSUED FOR REVIEW	2025-08-21	

VR Vanderwesten & Rutherford Associates Inc.
 Mechanical & Electrical Engineers
 London, Windsor, Ottawa
 www.vrinc.ca | 519-652-5047
 V19 25-009

Seals

Project:
BROWNSVILLE COMMUNITY CENTRE FIRE HALL BACK-UP GENERATOR

292244 CULLODEN LINE, TILLSONBURG, ON

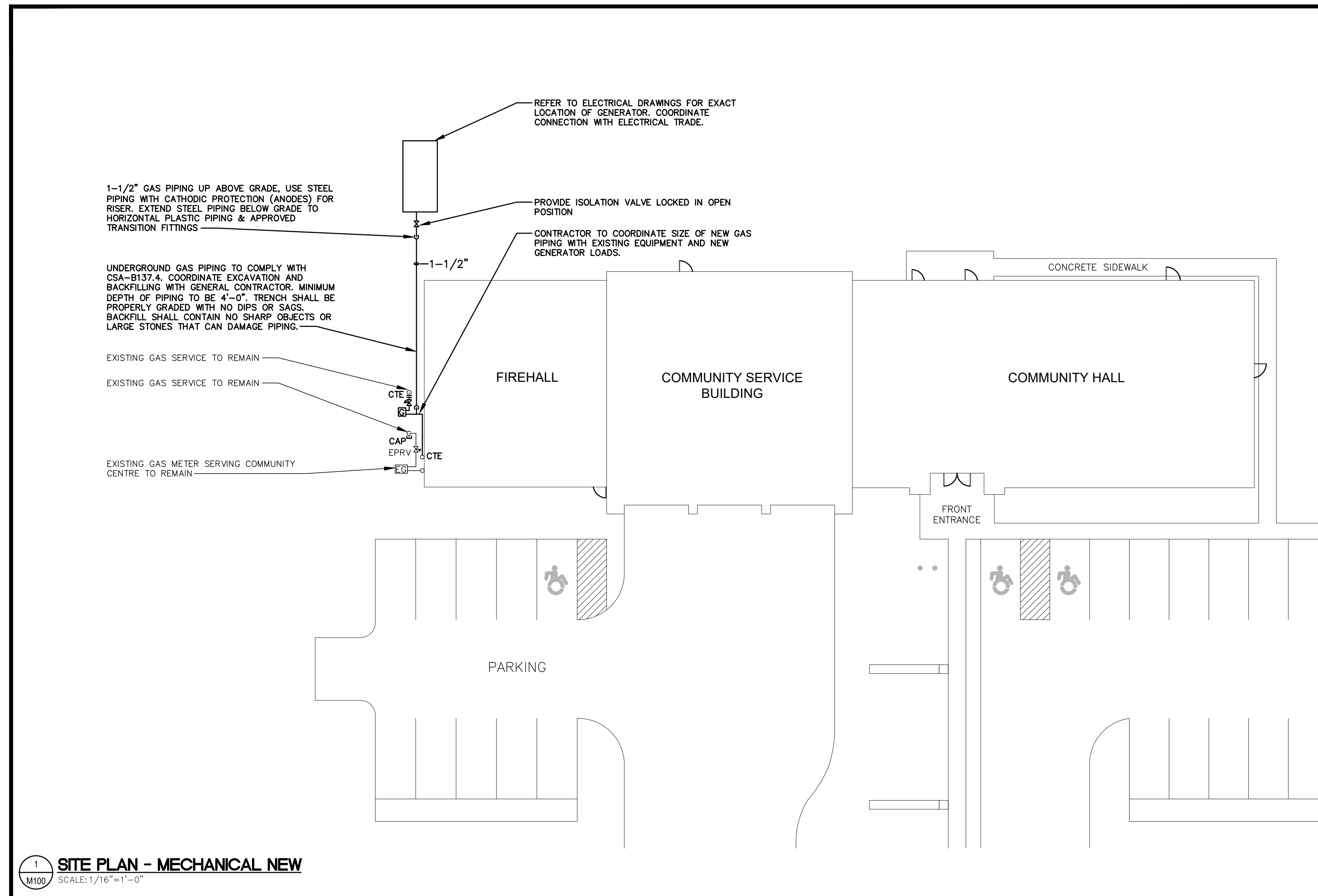
Drawing Title:

NEW ELECTRICAL SITE PLAN AND DETAILS

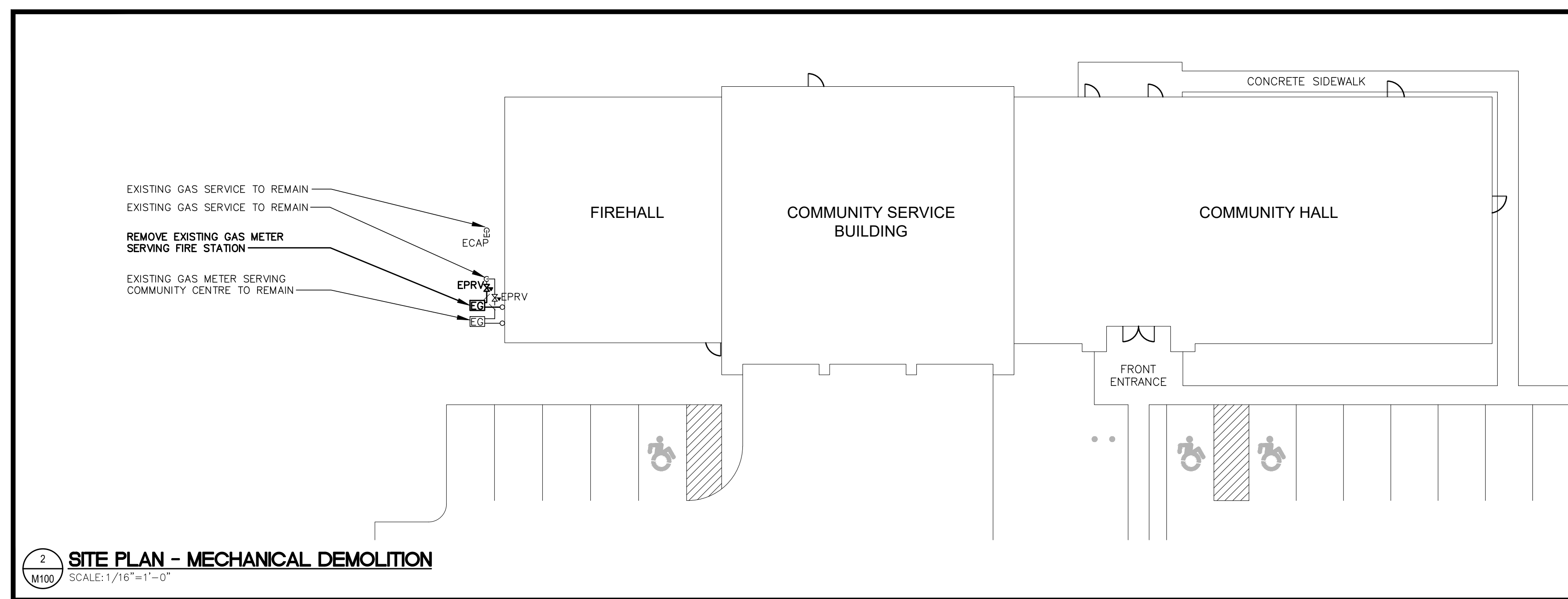
Drawn By: MA/MA
 Checked By: AF

Date:
 Scale: AS NOTED

Project Number:
 Drawing No: **E101**



1 SITE PLAN - MECHANICAL NEW
SCALE: 1/16" = 1'-0"



2 SITE PLAN - MECHANICAL DEMOLITION
SCALE: 1/16" = 1'-0"

GENERAL NOTES

- CONTRACTOR TO SITE VERIFY DETERMINE EXISTING GAS LOAD THAT WILL BE ADDED TO THE NEW GAS METER. CONTRACTOR SHALL APPLY FOR NEW GAS METER WITH ENBRIDGE USING TOTAL GAS LOAD, INCLUDING THE NEW GENERATOR (890MBH).

REVIEW ALL DRAWINGS AND VERIFY ALL DIMENSIONS AT THE SITE. DO NOT SCALE THE DRAWINGS. REPORT ALL DISCREPANCIES TO THE ENGINEER BEFORE PROCEEDING WITH ANY CONSTRUCTION OR SHOP FABRICATION. ALL DRAWINGS, SPECIFICATIONS AND RELATED DOCUMENTS ARE THE COPYRIGHT PROPERTY OF VANDERWESTEN & RUTHERFORD ASSOCIATES INC. AND MUST BE RETURNED UPON REQUEST. REPRODUCTION OF DRAWINGS, SPECIFICATIONS AND RELATED DOCUMENTS IN PART OR WHOLE IS FORBIDDEN WITHOUT THE ENGINEER'S WRITTEN PERMISSION.

No.	Issued	Date	By
2	ISSUED FOR TENDER	2026-03-31	
1	ISSUED FOR REVIEW	2025-08-21	

VR Vanderwesten & Rutherford Associates Inc.
Mechanical & Electrical Engineers
London, Windsor, Ottawa
www.vreng.ca | 519-652-5047
VIR 25-000

Seals

Project:
BROWNSVILLE COMMUNITY CENTRE FIRE HALL BACK-UP GENERATOR

292244 CULLODEN LINE, TILLSONBURG, ON

Drawing Title:
SITE PLAN AND NOTES - MECHANICAL NEW AND DEMOLITION

Drawn By: RR	Checked By: NV
Date:	Scale: AS NOTED
Project Number:	Drawing No.: M100