

ADDENDUM #5

TENDER 2026-03 BROWNSVILLE COMMUNITY CENTRE / FIRE HALL BACK-UP GENERATOR

Electrical Addendum E-01

See documents attached.

ELECTRICAL ADDENDUM

E-01

Date: 2026-05-28

Project: Brownsville Community Centre Fire Hall Back
up generator

Project No.: VR25-069

This addendum forms part of the contract documents and amends the original bidding requirements, drawings and specifications noted below.

1 ELECTRICAL

1.1 SPECIFICATION

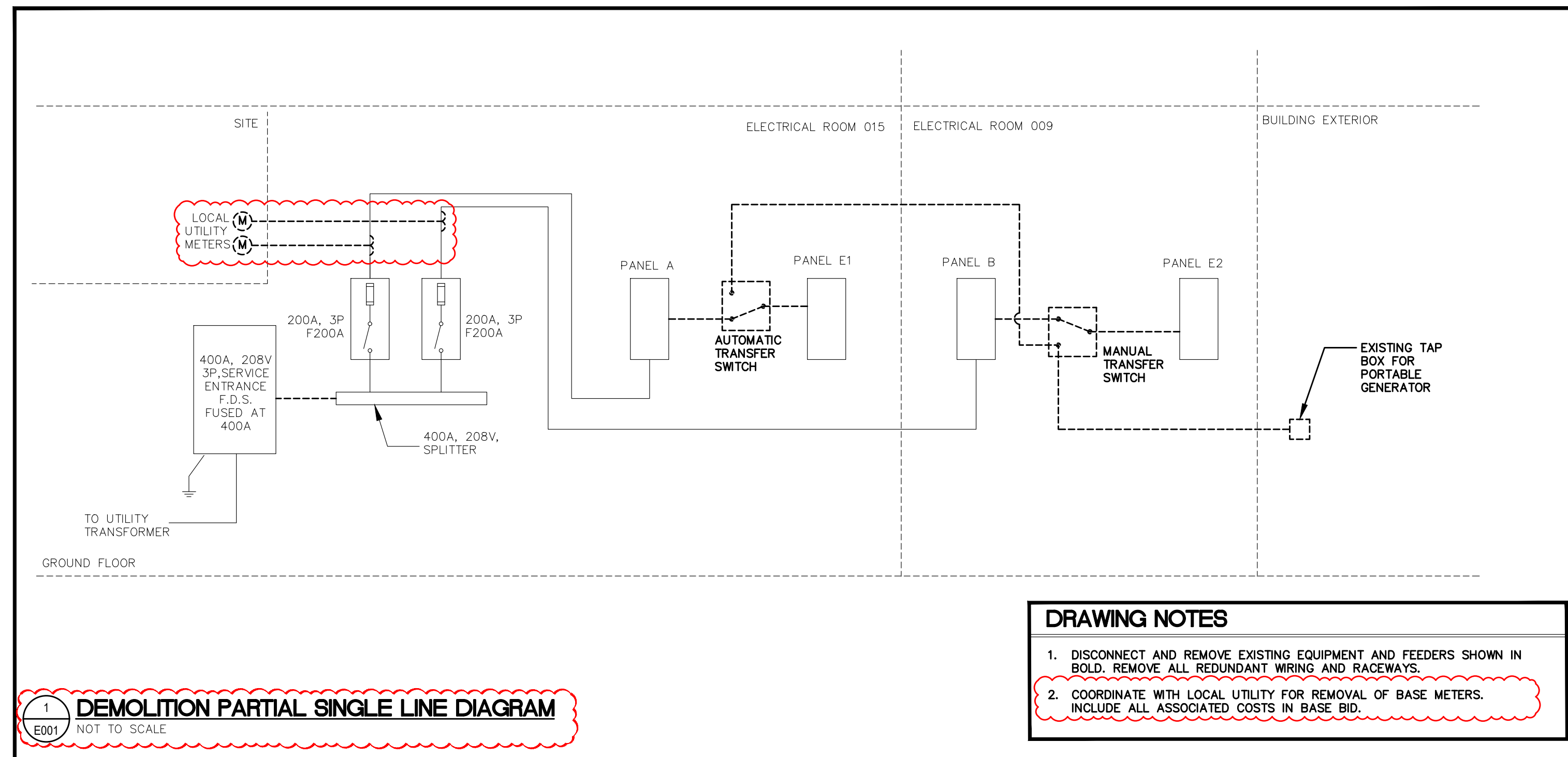
- .1 Refer to Section 26.07.10 Engine-Generator Set
 - .1 Add Paramount Power Systems as an accepted manufacturer under Subsection 1.4.

1.2 DRAWINGS

- .1 Refer to Drawing No. E001 Electrical drawing list, legend, notes, schedules and single line diagrams
 - .1 Refer to the revised legend for symbols as indicated on E001.1, issued herewith.
 - .2 As per the revised partial SLD, the two existing utility metering bases shall be replaced with one new 400A service meter and provide an external multi-meter for feeders as indicated on the revised partial SLD, issued herewith
- .2 Refer to Drawing No. E100 Demolition Electrical Site Plan
 - .1 Refer to the Site Plan and include the removal of the existing meter bases as indicated on Drawing E100.1 issued herewith.
- .3 Refer to Drawing No. E101 New Electrical Site Plan and Details
 - .1 Refer to revise duct bank for the generator feeder, issued herewith.
 - .2 Refer to the addition of a new local utility meter at the exterior and a customer-owned power meter in the electrical room, issued herewith.
 - .3 Refer to the revised generator duct bank detail issued herewith..

END OF ADDENDUM E-01

REVIEW ALL DRAWINGS AND VERIFY ALL DIMENSIONS AT THE SITE. DO NOT SCALE THE DRAWINGS. REPORT ALL DISCREPANCIES TO THE ENGINEER BEFORE PROCEEDING WITH ANY CONSTRUCTION OR SHOP FABRICATION. ALL DRAWINGS, SPECIFICATIONS AND RELATED DOCUMENTS ARE THE COPYRIGHT PROPERTY OF VANDERWESTEN & RUTHERFORD ASSOCIATES INC. AND MUST BE RETURNED UPON REQUEST. REPRODUCTION OF DRAWINGS, SPECIFICATIONS AND RELATED DOCUMENTS IN PART OR WHOLE IS FORBIDDEN WITHOUT THE ENGINEER'S WRITTEN PERMISSION.



1 DEMOLITION PARTIAL SINGLE LINE DIAGRAM
E001 NOT TO SCALE

- DRAWING NOTES**
- DISCONNECT AND REMOVE EXISTING EQUIPMENT AND FEEDERS SHOWN IN BOLD. REMOVE ALL REDUNDANT WIRING AND RACEWAYS.
 - COORDINATE WITH LOCAL UTILITY FOR REMOVAL OF BASE METERS. INCLUDE ALL ASSOCIATED COSTS IN BASE BID.

EXISTING SCHEDULE

PANEL A		225AMP 120/208V 3Ø 4W		SURFACE MTD	
WATTS FOR	NO	TYPE	ELEC ROOM	015	
REC-PANEL	1	15	1	2	15
REC-PANEL	1	15	3	4	15
EXISTING CIRCUIT	1	15	5	6	15
EXISTING CIRCUIT	1	15	7	8	15
ELECTRIC HEATER	2	15	9	10	15
SPACE			11	12	15
SPACE			13	14	15
REC-DRYER	2	30	15	16	15
REC-DRYER	2	30	17	18	15
REC-STOVE	2	40	19	20	15
REC-STOVE	2	40	21	22	15
ROOF TOP UNIT	3	40	23	24	15
ROOF TOP UNIT	3	40	25	26	15
ROOF TOP UNIT	3	40	27	28	15
GENSET PANEL	2	60	31	32	15
GENSET PANEL	2	60	33	34	15
SPARE	1	20	35	36	15
SPARE	1	20	37	38	15
PANEL E1	3	60	39	40	15
REC-WASHER	1	15	41	42	15
REC-KITCHEN COUTNER	1	15	43	44	15
REC-KITCHEN COUTNER	1	15	45	46	15
EXISTING CIRCUIT	1	15	47	48	15
REC-OUTSIDE PLUG	1	15	49	50	15
SPACE			51	52	15
SPACE			53	54	15

EXISTING SCHEDULE

PANEL B		225AMP 120/208V 3Ø 4W		SURFACE MTD	
WATTS FOR	NO	TYPE	ELEC ROOM	009	
EXISTING CIRCUIT	1	15	1	2	15
REC-FRONT OUTSIDE	1	15	3	4	15
REC-REAR OUTSIDE	1	15	5	6	15
REC-HALL	1	15	7	8	20
REC-HALL	1	20	9	10	15
REC-SERVERY	1	20	11	12	20
REC-SERVERY	1	20	13	14	20
EXHAUST FANS	1	15	15	16	15
REC-LIBRARY	1	15	17	18	15
REC-LIBRARY	1	15	19	20	15
STAGE TAP BOX	3	100	21	22	15
STAGE TAP BOX	3	100	23	24	15
EXISTING CIRCUIT	1	15	25	26	15
EXISTING CIRCUIT	1	15	27	28	15
EXISTING CIRCUIT	1	15	29	30	15
EXISTING CIRCUIT	1	15	31	32	15
EXISTING CIRCUIT	1	15	33	34	15
EXISTING CIRCUIT	1	15	35	36	15
EXISTING CIRCUIT	1	15	37	38	15
EXISTING CIRCUIT	1	15	39	40	15
EXISTING CIRCUIT	1	15	41	42	15
EXISTING CIRCUIT	1	15	43	44	15
EXISTING CIRCUIT	1	15	45	46	15
EXISTING CIRCUIT	1	15	47	48	15
EXISTING CIRCUIT	1	15	49	50	15
EXISTING CIRCUIT	1	15	51	52	15
SPACE			53	54	15
SPACE			55	56	15
SPACE			57	58	50
SPACE			59	60	15
SPACE			61	62	15
SPACE			63	64	15
SPACE			64	66	15
SPACE			65	68	15
SPACE			69	70	60
SPACE			71	72	15

EXISTING SCHEDULE

PANEL E2		225AMP 120/208V 3Ø 4W		SURFACE MTD	
WATTS FOR	NO	TYPE	ELEC ROOM	009	
REC-HALL	1	20	1	2	15
REC-HALL	1	20	3	4	15
REC-KITCHEN	1	15	5	6	15
HANDICAP DOOR	1	15	7	8	15
KITCHEN FRIDGE	1	20	9	10	15
BAR FRIDGE	1	15	11	12	15
KITCHEN EXHAUST	1	15	13	14	15
REC-LIBRARY	1	15	15	16	15
EXISTING CIRCUIT	1	15	17	18	15
HANDICAP DOOR	1	15	19	20	15
WATER HEATER	1	15	21	22	15
SPACE			23	24	15
SPACE			25	26	15
SPACE			27	28	15
SPACE			29	30	15

EXISTING SCHEDULE

PANEL E1		225AMP 120/208V 3Ø 4W		SURFACE MTD	
WATTS FOR	NO	TYPE	ELEC ROOM	015	
FIRE ALARM PANEL	1	15	1	2	20
EXISTING CIRCUIT	1	15	3	4	20
EXISTING CIRCUIT	1	15	5	6	20
SEPTIC PUMP	1	20	7	8	20
SEPTIC PUMP	1	20	9	10	15
SEPTIC CONT. POWER	1	15	11	12	15
SEPTIC ALARM	1	15	13	14	15
BATH EXHAUST	1	15	15	16	15
LITG-BATH/OFFICE/EXIT	1	15	17	18	15
IN-FLOOR CIRC. PUMP	1	15	19	20	15
BOILER	1	15	21	22	15
EXISTING CIRCUIT	1	15	23	24	15
REC-PHONE	1	15	25	26	15
REC-APPARATUS	1	15	27	28	15
EXISTING CIRCUIT	1	15	29	30	15
REC-APP/RADIO	1	15	31	32	15
REC-OUTSIDE	1	15	33	34	15
SPACE			35	36	15
SPACE			37	38	15
SPACE			39	40	15
SPACE			41	42	15

- NOTES FOR EXISTING PANELS
- BREAKERS LABELED AS "PANEL E1" AND "PANEL E2" ARE EXISTING TO REMAIN AND TO BE REUSED WITH INSTALLATION OF NEW SUB PANEL FEEDERS, AS NOTED IN DETAIL 2 ON THIS SHEET.
 - PROVIDE NEW BREAKER AND CONNECT AS INDICATED ON SINGLE LINE DIAGRAM.
 - EXISTING PANEL SCHEDULES ARE PROVIDED FOR REFERENCE ONLY

DRAWING LIST

E001	ELECTRICAL DRAWING LIST, LEGEND, NOTES, SCHEDULES AND PARTIAL SINGLE LINE DIAGRAMS
E100	DEMOLITION ELECTRICAL SITE PLAN
E101	NEW ELECTRICAL SITE PLAN AND DETAILS
M100	SITE PLAN AND NOTES - MECHANICAL NEW AND DEMOLITION

- GENERAL NOTES**
- DO NOT SCALE DRAWINGS FOR INSTALLATION PURPOSES. OBTAIN ALL DIMENSIONS FROM MANUFACTURER'S SHOP DRAWINGS, AND ON SITE INSPECTIONS.
 - ALL EXISTING DEAD WIRING AND CONDUIT IN RENOVATED AREAS SHALL BE REMOVED IN ITS ENTIRETY WHERE ACCESSIBLE. WHERE NOT ACCESSIBLE, WIRING ONLY SHALL BE REMOVED AND CONDUIT SHALL REMAIN.
 - DISCONNECT AND REMOVE ANY ELECTRICAL EQUIPMENT IN CEILING SPACE OR WALLS THAT CAUSES INTERFERENCES DURING RENOVATION WORK. ALL EQUIPMENT SHALL BE REPLACED AND RECONNECTED UPON COMPLETION OF RENOVATION WORK.
 - ELECTRICAL EQUIPMENT BEING REMOVED AND NOT BEING REUSED WILL BE STORED ON SITE AND REMAIN THE PROPERTY OF THE OWNER. ANY SUCH EQUIPMENT THE OWNER DOES NOT WISH TO RETAIN WILL BE REMOVED FROM SITE AND DISPOSED OF BY THIS TRADE.
 - COORDINATE EXACT CONDUIT ROUTINGS WITH BUILDING ELEMENTS AND SYSTEMS IN THE FIELD PRIOR TO INSTALLATION. INSTALL CONDUITS PARALLEL TO BUILDING LINES TO THE GREATEST EXTENT POSSIBLE.
 - MAKE GOOD SURFACES AFFECTED BY THIS WORK AND REPAIR FINISH TO THE SATISFACTION OF CONSULTANT.
 - DIVISION 26 SHALL PROVIDE FIRESTOPPING OF NEW ELECTRICAL PENETRATIONS THROUGH ALL WALLS AND FLOORS IN THE AREAS OF WORK. REFER TO ARCHITECTURAL DRAWINGS FOR RATINGS OF FIRE SEPARATIONS. PROVIDE MANUFACTURER'S SHOP DRAWINGS FOR EACH PENETRATION CONDITION AND PROPOSED SEALANT TYPE.
 - PROVIDE UPDATED TYPED PANEL DIRECTORIES UPON COMPLETION OF WORK FOR ALL PANELS AFFECTED BY THE RENOVATION WORK.
 - CONTRACTOR TO MAKE GOOD ALL EXTERIOR GRADES AND SEED GRASSED AREAS TO ENSURE PRE-CONSTRUCTION GRADES AND EXTERIOR CONDITIONS ARE MAINTAINED. CONTRACTOR IS LIABLE FOR ALL/ANY DAMAGE.

- DEMOLITION NOTES**
- ELECTRICAL SYSTEMS SHOWN ON DEMOLITION PLANS ARE BASED ON INFORMATION OBTAINED FROM ORIGINAL CONSTRUCTION CONTRACT/TENDER DOCUMENTS. THESE DRAWINGS ARE NOT BASED ON "AS-BUILT RECORDS" OR ON EXHAUSTIVE FIELD MEASUREMENT AND ARE PROVIDED TO ASSIST THE CONTRACTOR IN DETERMINING THE EXTENT OF WORK REQUIRED. THE CONTRACTOR SHALL MAKE ALLOWANCE IN THEIR TENDER PRICE FOR THE REMOVAL OF ADDITIONAL ABANDONED SERVICES AND THE PROTECTION OF EXISTING SERVICES THAT MUST REMAIN. RECORD THE LOCATION OF ALL EXISTING SERVICES THAT REMAIN ON AS-BUILT RECORD DRAWINGS.

FEEDER SCHEDULE

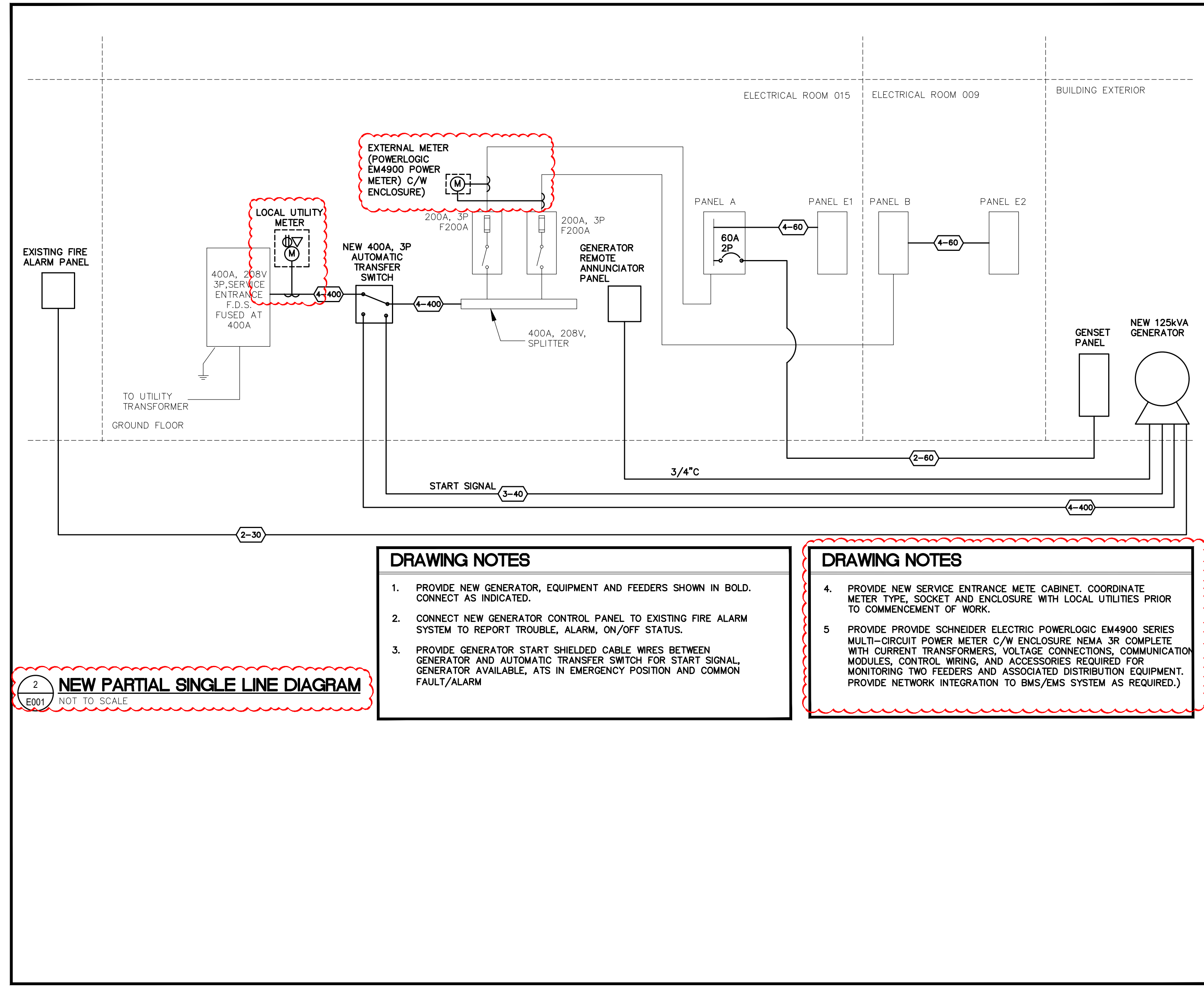
TAG	QUANTITY & SIZE OF COPPER CONDUCTORS AND CONDUITS	FEEDER AMPACITY
2-30	4 1/8" TWISTED PAIR FT4 IN 1" CONDUIT	*
2-40	2 #10 + #10 GROUND IN 3/4" CONDUIT	40
3-60	3 #6 + #10 GROUND IN 1-1/4" CONDUIT	60
4-400	2 (4 #3/0 + #6 GROUND IN 2-1/2" CONDUIT	400

LEGEND

SYMBOL	DESCRIPTION	MTG HT &
[Symbol]	ELECTRICAL PANEL	78" (1981) TO TOP
[Symbol]	DISCONNECT SWITCH	50" (1270)
[Symbol]	EXISTING TO REMAIN	
[Symbol]	15AMP 125VOLT U-GROUND DUPLEX RECEPTACLE	
[Symbol]	DATA OUTLET C/W 3/4" (19mm) CONDUIT	

PARTIAL SINGLE LINE DIAGRAM LEGEND

SYMBOL	DESCRIPTION
[Symbol]	FUSED DISCONNECT SWITCH
[Symbol]	GENERATOR
[Symbol]	BREAKER
[Symbol]	METER C/W CURRENT TRANSFORMER



2 NEW PARTIAL SINGLE LINE DIAGRAM
E001 NOT TO SCALE

- DRAWING NOTES**
- PROVIDE NEW GENERATOR, EQUIPMENT AND FEEDERS SHOWN IN BOLD. CONNECT AS INDICATED.
 - CONNECT NEW GENERATOR CONTROL PANEL TO EXISTING FIRE ALARM SYSTEM TO REPORT TROUBLE, ALARM, ON/OFF STATUS.
 - PROVIDE GENERATOR START SHIELDED CABLE WIRES BETWEEN GENERATOR AND AUTOMATIC TRANSFER SWITCH FOR START SIGNAL. GENERATOR AVAILABLE, ATS IN EMERGENCY POSITION AND COMMON FAULT/ALARM

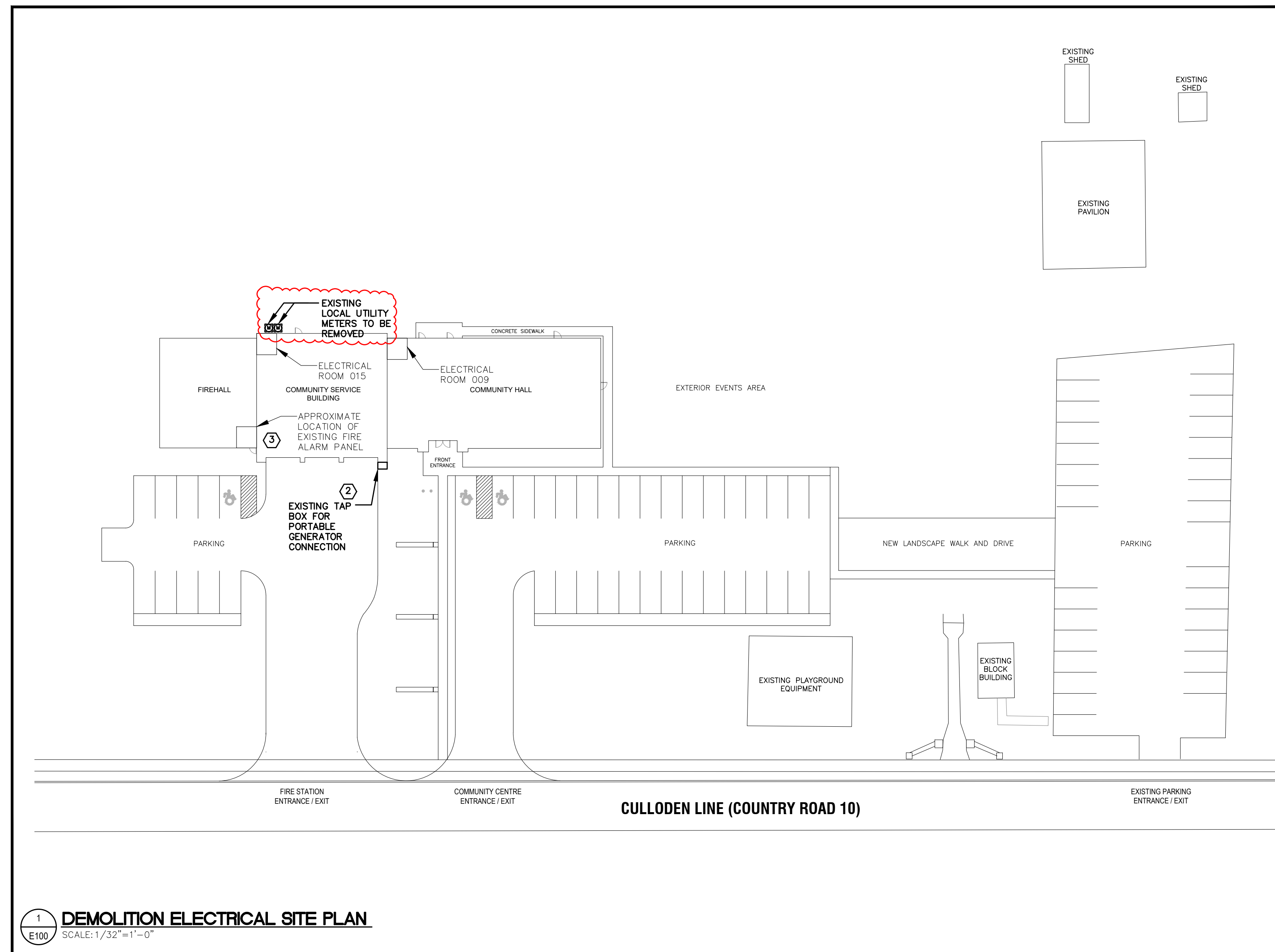
- DRAWING NOTES**
- PROVIDE NEW SERVICE ENTRANCE METER CABINET. COORDINATE METER TYPE, SOCKET AND ENCLOSURE WITH LOCAL UTILITIES PRIOR TO COMMENCEMENT OF WORK.
 - PROVIDE SCHNEIDER ELECTRIC POWERLOGIC EM4900 SERIES MULTI-CIRCUIT POWER METER C/W ENCLOSURE NEMA 3R COMPLETE WITH CURRENT TRANSFORMERS, VOLTAGE CONNECTIONS, COMMUNICATION MODULES, CONTROL WIRING, AND ACCESSORIES REQUIRED FOR MONITORING TWO FEEDERS AND ASSOCIATED DISTRIBUTION EQUIPMENT. PROVIDE NETWORK INTEGRATION TO BMS/EMS SYSTEM AS REQUIRED.)

Project:
BROWNSVILLE COMMUNITY CENTRE FIRE HALL BACK-UP GENERATOR

292244 CULLODEN LINE, TILLSONBURG, ON
Drawing Title:

ELECTRICAL DRAWING LIST, LEGEND, NOTES, SCHEDULES AND SINGLE LINE DIAGRAMS

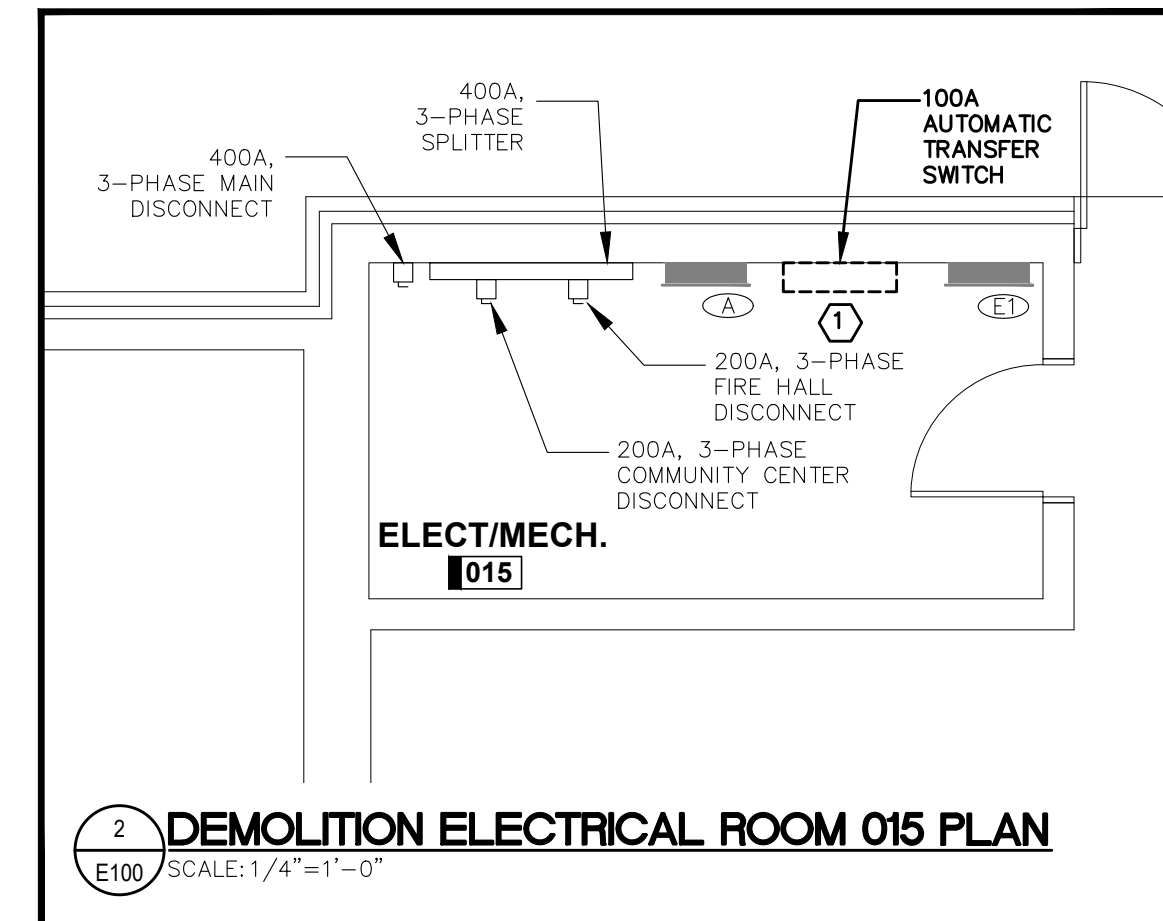
Drawn By:	Checked By:
MA	AF
Date:	Scale:
	NOT TO SCALE
Project Number:	Drawing No.:
25-089	E001



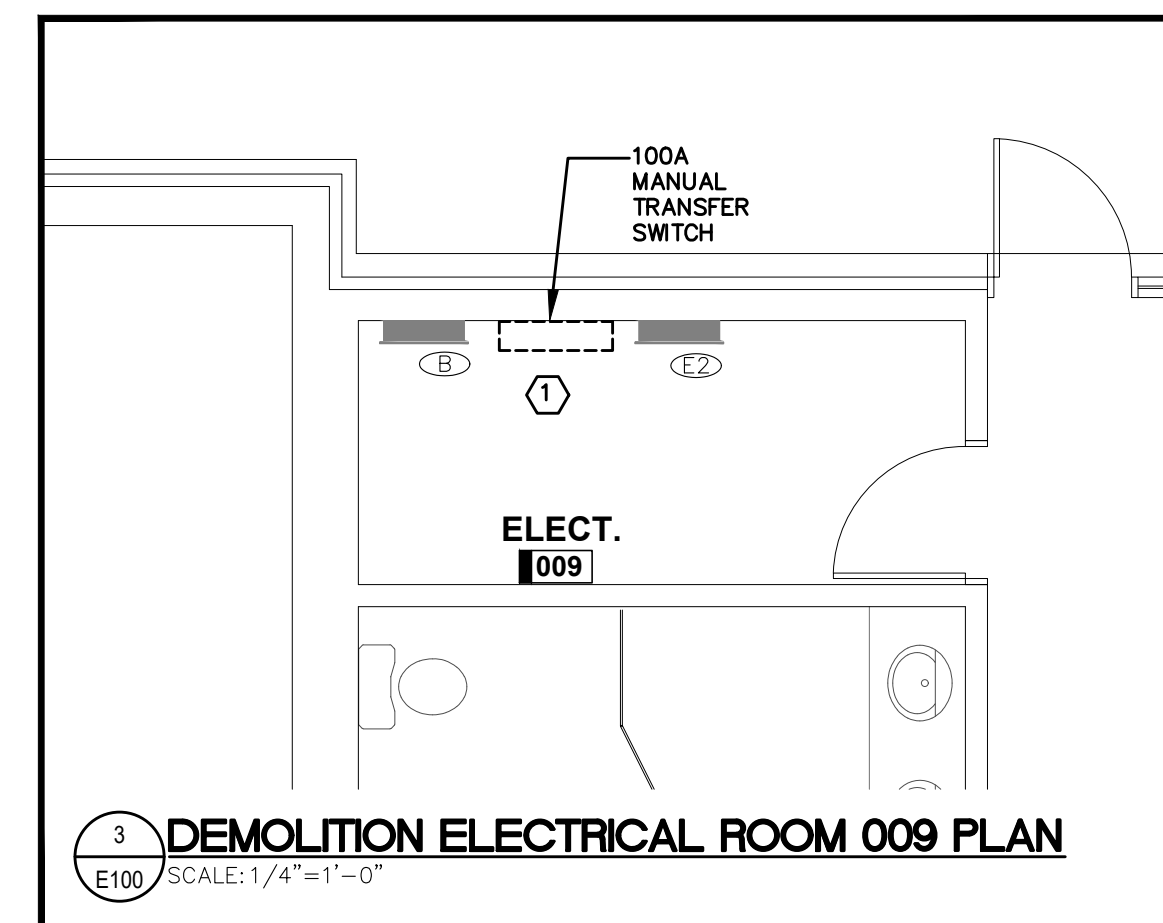
1 DEMOLITION ELECTRICAL SITE PLAN
SCALE: 1/32"=1'-0"

DEMOLITION DRAWING NOTES

- 1 DISCONNECT AND REMOVE TRANSFER SWITCH. REMOVE FEEDERS BACK TO POWER SOURCES. FEEDER TO LOAD PANEL AND ALL ASSOCIATED WIRING. REFER TO SINGLE LINE DIAGRAMS ON DRAWING E001 FOR FURTHER DETAILS.
- 2 DISCONNECT AND REMOVE EXISTING TAP BOX FOR PORTABLE GENERATOR AND REMOVE FEEDERS AND CONDUIT BACK TO SOURCE. REFER TO SINGLE LINE DIAGRAMS ON DRAWING E001 FOR FURTHER DETAILS.
- 3 CONTRACTOR TO CONFIRM EXACT LOCATION AND TYPE OF FIRE ALARM PANEL ON-SITE.



2 DEMOLITION ELECTRICAL ROOM 015 PLAN
SCALE: 1/4"=1'-0"



3 DEMOLITION ELECTRICAL ROOM 009 PLAN
SCALE: 1/4"=1'-0"

REVIEW ALL DRAWINGS AND VERIFY ALL DIMENSIONS AT THE SITE. DO NOT SCALE THE DRAWINGS. REPORT ALL DISCREPANCIES TO THE ENGINEER BEFORE PROCEEDING WITH ANY CONSTRUCTION OR SHOP FABRICATION. ALL DRAWINGS, SPECIFICATIONS AND RELATED DOCUMENTS ARE THE COPYRIGHT PROPERTY OF VANDERWESTEN & RUTHERFORD ASSOCIATES INC. AND MUST BE RETURNED UPON REQUEST. REPRODUCTION OF DRAWINGS, SPECIFICATIONS AND RELATED DOCUMENTS IN PART OR WHOLE IS FORBIDDEN WITHOUT THE ENGINEER'S WRITTEN PERMISSION.

No.	Issued	Date	By
3	ISSUED FOR ADDENDUM ME-01	2026-05-27	
2	ISSUED FOR TENDER	2026-03-31	
1	ISSUED FOR REVIEW	2025-08-21	

VR Vanderwesten & Rutherford Associates Inc.
Mechanical & Electrical Engineers
London, Windsor, Ottawa
www.vreng.ca | 519-652-5047
VIR 25-009

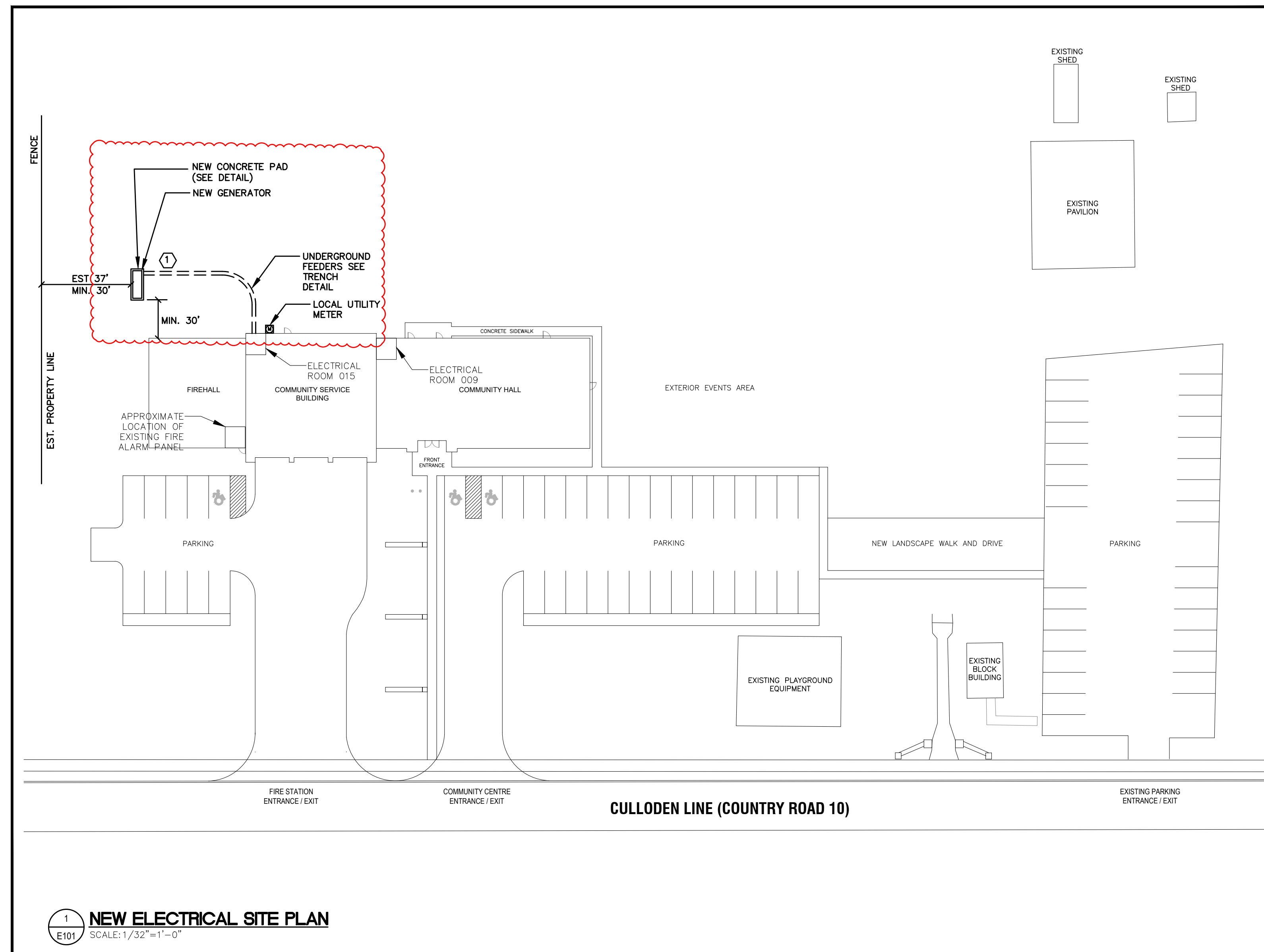
Seals

Project:
BROWNSVILLE COMMUNITY CENTRE FIRE HALL BACK-UP GENERATOR

292244 CULLODEN LINE, TILLSONBURG, ON

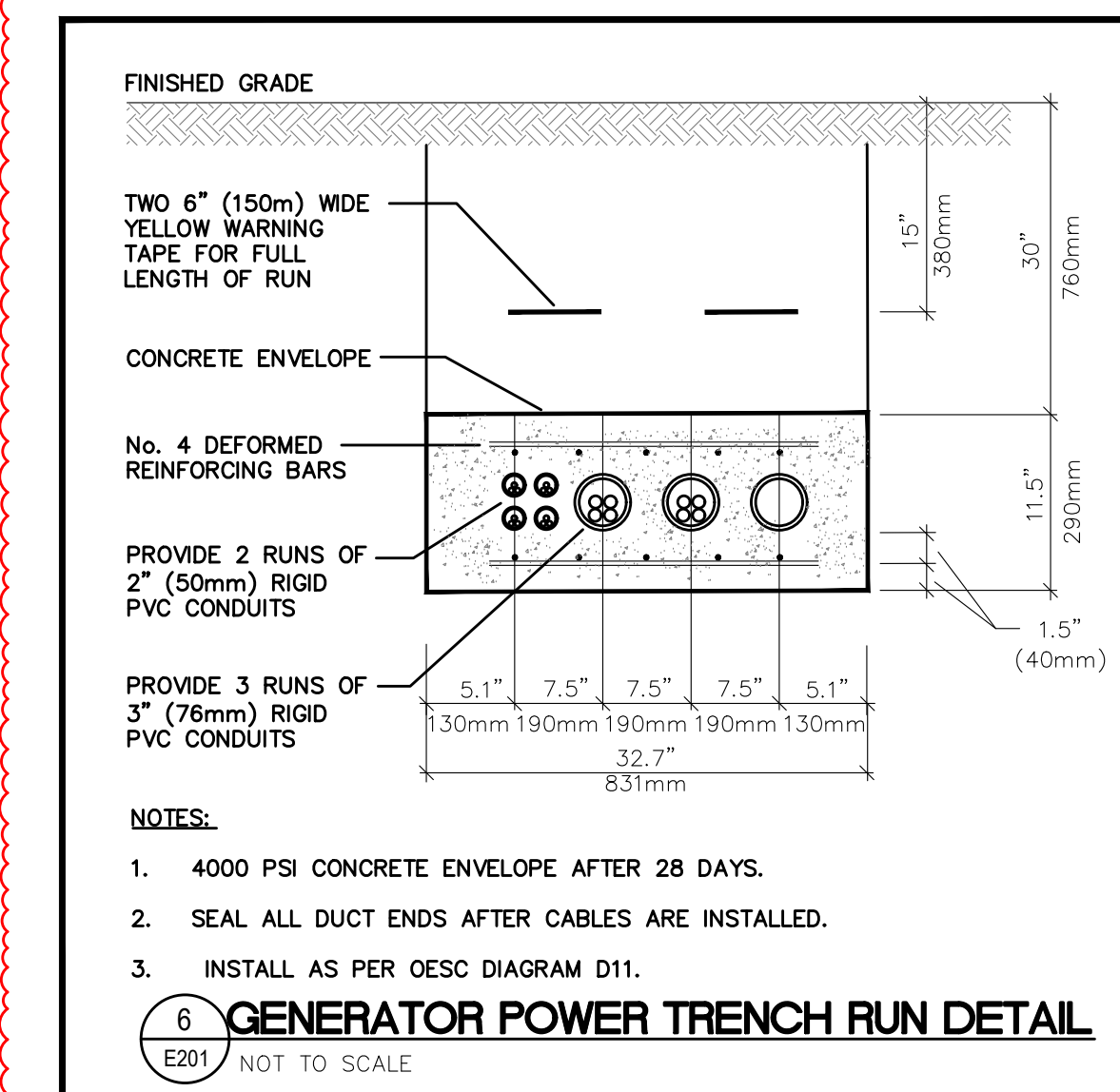
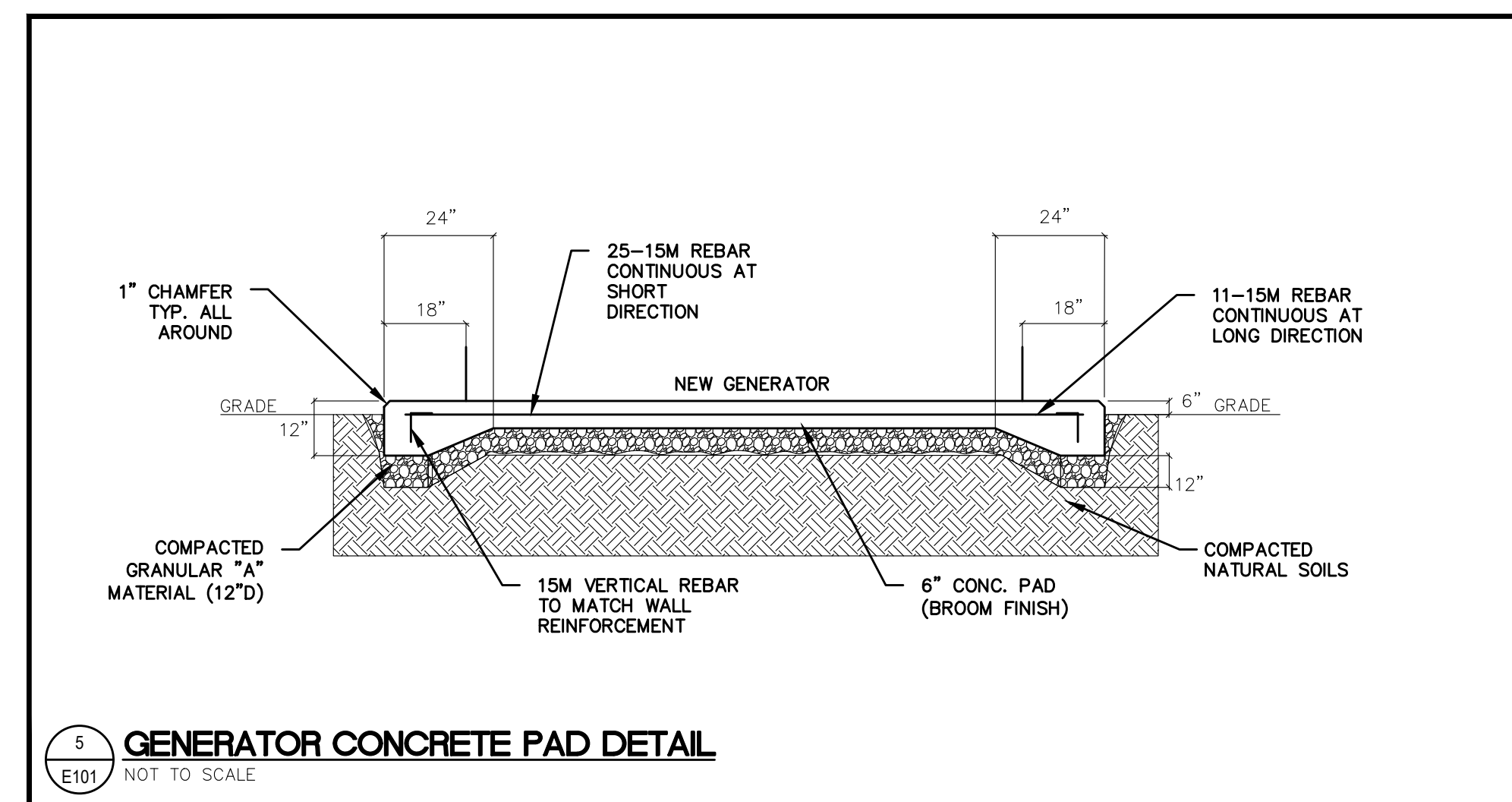
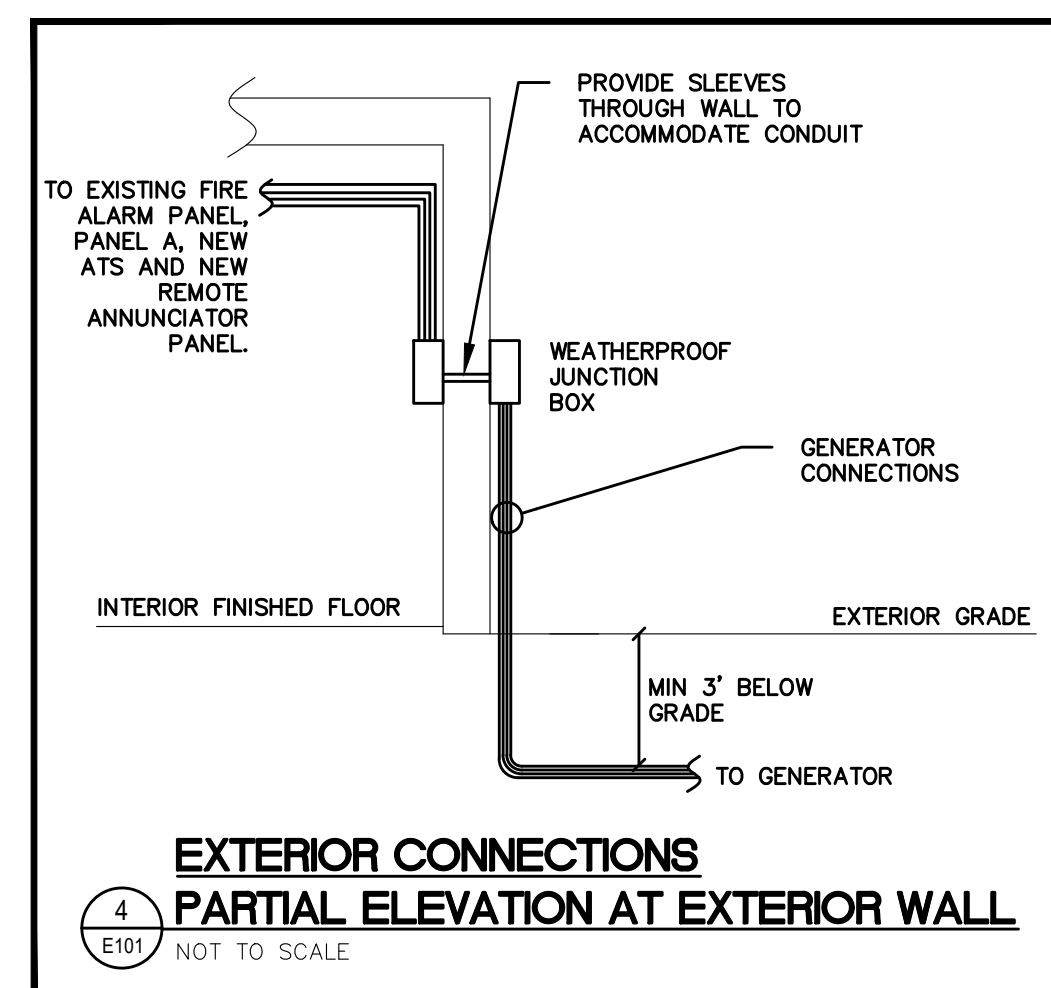
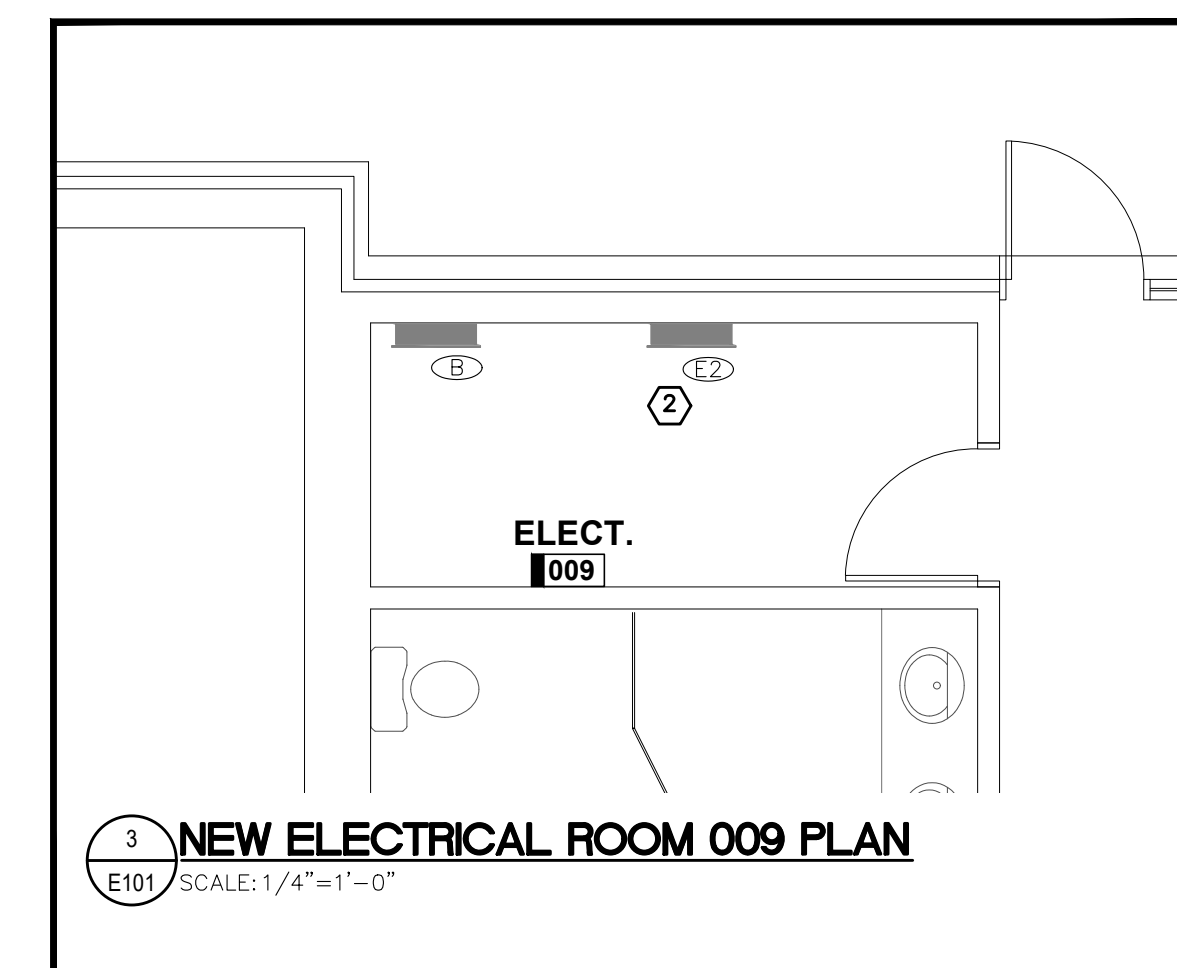
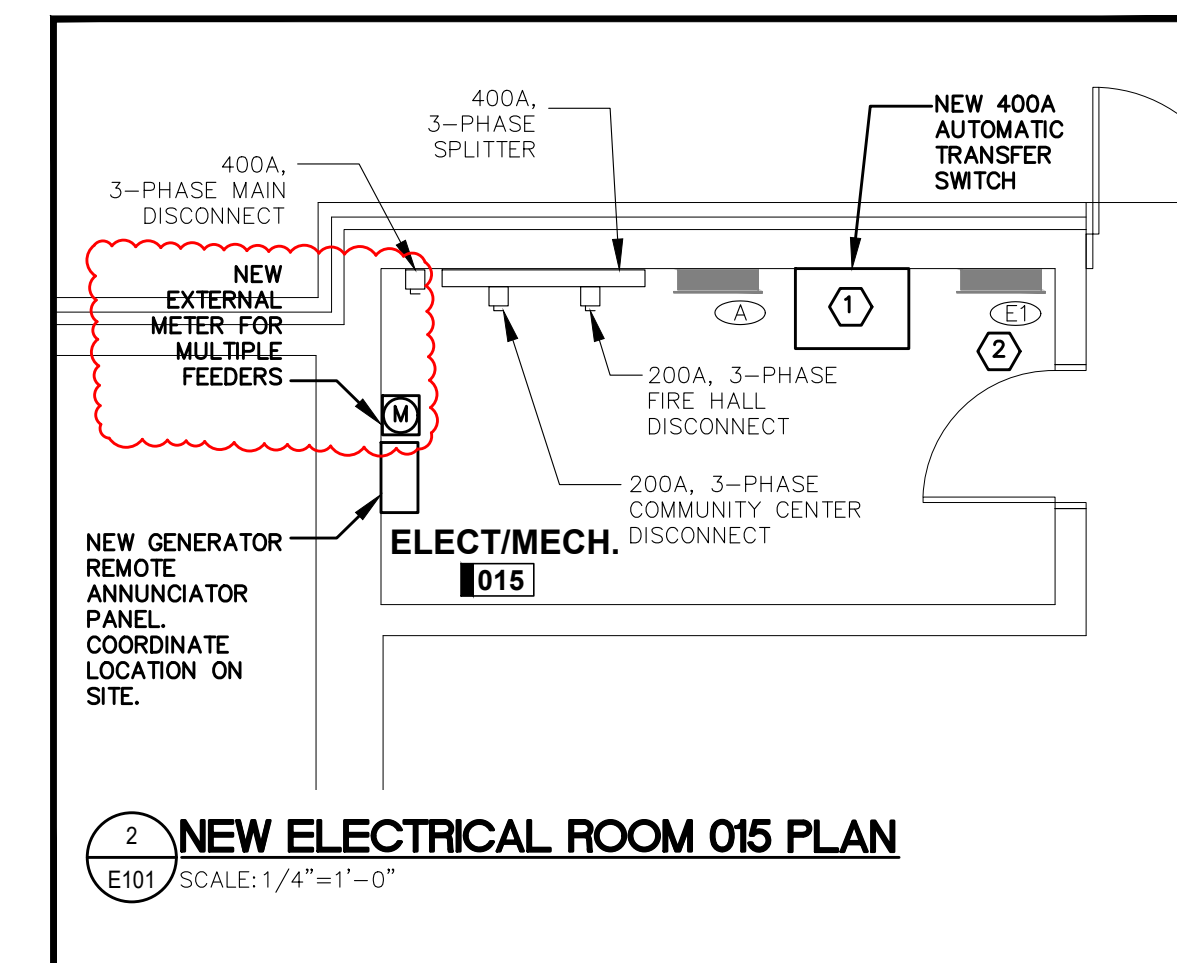
Drawing Title:
DEMOLITION ELECTRICAL SITE PLAN

Drawn By: MA	Checked By: AF
Date:	Scale: AS NOTED
Project Number:	Drawing No.: E100



NEW DRAWING NOTES

- 1 PROVIDE NEW GENERATOR AND TRANSFER SWITCH. CONNECT AS INDICATED IN SINGLE LINE DIAGRAM ON DRAWING E001
- 2 REFEEED EXISTING PANEL AS INDICATED IN SINGLE LINE DIAGRAM ON DRAWING E001



REVIEW ALL DRAWINGS AND VERIFY ALL DIMENSIONS AT THE SITE. DO NOT SCALE THE DRAWINGS. REPORT ALL DISCREPANCIES TO THE ENGINEER BEFORE PROCEEDING WITH ANY CONSTRUCTION OR SHOP FABRICATION. ALL DRAWINGS, SPECIFICATIONS AND RELATED DOCUMENTS ARE THE COPYRIGHT PROPERTY OF VANDERWESTEN & RUTHERFORD ASSOCIATES INC. AND MUST BE RETURNED UPON REQUEST. REPRODUCTION OF DRAWINGS, SPECIFICATIONS AND RELATED DOCUMENTS IN PART OR WHOLE IS FORBIDDEN WITHOUT THE ENGINEER'S WRITTEN PERMISSION.

No.	Issued	Date	By
3	ISSUED FOR ADDENDUM ME-01	2026-05-27	
2	ISSUED FOR TENDER	2026-03-31	
1	ISSUED FOR REVIEW	2025-08-21	

VR Vanderwesten & Rutherford Associates Inc.
Mechanical & Electrical Engineers
London, Windsor, Ottawa
www.vrinc.ca 519-652-5047
VIR 25-009

Seals

Project:
BROWNSVILLE COMMUNITY CENTRE FIRE HALL BACK-UP GENERATOR

292244 CULLODEN LINE, TILLSONBURG, ON

Drawing Title:

NEW ELECTRICAL SITE PLAN AND DETAILS

Drawn By: MA/MA
Checked By: AF

Date: AS NOTED
Scale: AS NOTED

Project Number: Drawing No.: **E101**